

Bartholomew Villas

Location: London, UK

Client: Private

Completed: 1965

Size: 100 sqm

A house, originally designed for a devoted musician and his wife, **composed into its surroundings.**

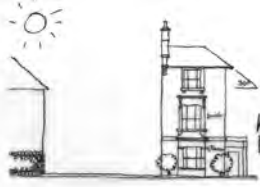
Living and sleeping accommodation were located on the middle floor with a gallery above for chamber music and a flat and two garages below.

The house is a 'lean to', completing the bombed-off south half of the last of a row of mid-nineteenth-century, double fronted villas. Facing south, the house reduces the scale which introduces you to the first of a row of small, later villas which are on a curve.

The pitched roof of the new house lends a sense of movement to the main living space, enhanced by the elaborate eaves detail.

The section is split to create low-level clerestory windows, with a continuous bookshelf tucked in under the cill running the full length of the house.

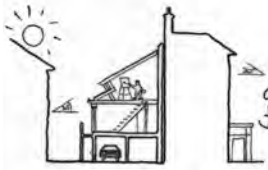




half a villa in Kentish Town,
the other half bombed off in the war



extend the stucco base to contain garages



and build a living floor and a studio
floor on top.

