

Bradwell Common 2

Location: Milton Keynes, UK
Client: Milton Keynes Development Corporation
Completed: 1981
Size: 340,000 sqm
No. of homes: 160

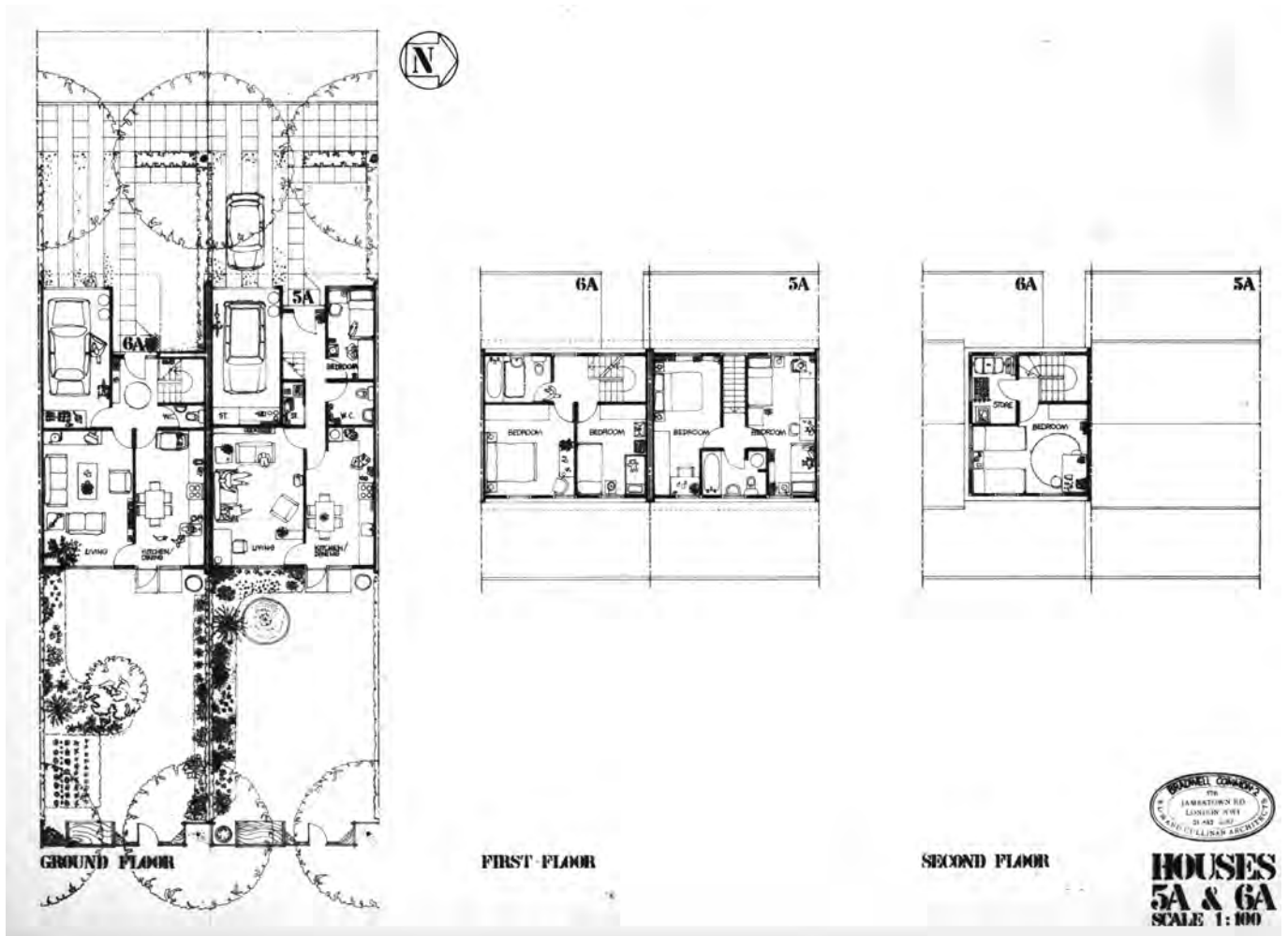
Twenty years after the founding of Milton Keynes, Bradwell Common 2 was the **first housing scheme to put the houses back on the street.**

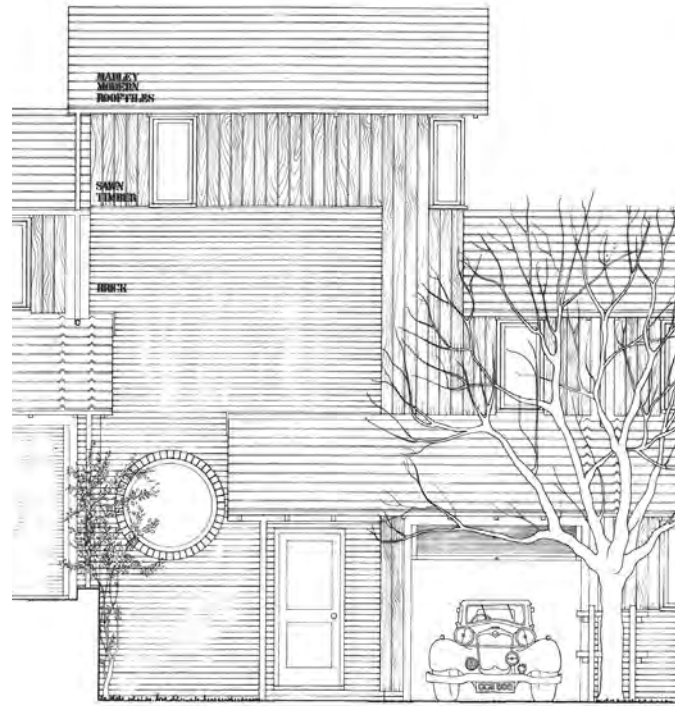
Two city blocks are lined with housing and bisected by a mews running north/south. The corners of the terraces are marked by taller blocks and some with shops.

The timber-frame houses came in 17 types and sizes to suit various numbers of people and celebrate situations that occur on the site: boulevard, avenue, mews, inward corner, outward corner, hill, opening or portal, end and so on.

The housing is mainly clad in buff brick with timber boarding stained blue to the street and green to the gardens, with red stained soffits in the mews.

The scheme was well received in 'The Housing Design Handbook: A guide to good practice' - David Levitt's 2009 comprehensive review of what makes UK housing successful.





ELEVATION FROM STREET HOUSE 6A



WEST ROAD

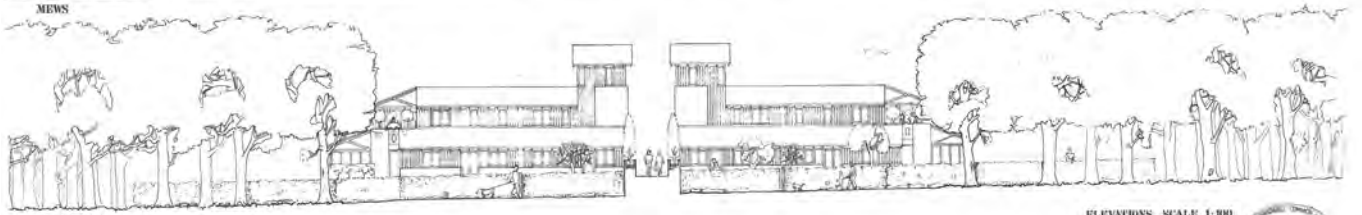


CENTRAL ROAD

ELEVATIONS SCALE 1:100



NEWS



SOUTH COURT

ELEVATIONS SCALE 1:100

