

# Camden Mews

**Location:** London, UK

**Client:** Ted Cullinan

**Complete:** 1964

**Size:** 92sqm

Grade II\* listed

**Cullinan Studio founder, the late Ted Cullinan, built his passive-solar home in Camden Mews with family and friends in two years of weekends.**

Camden Mews is an early example of a passive-solar house. Facing almost south it gains heat and light from the low winter sun, with overhangs protecting the house from unwanted solar gain and glare from the high summer sun. The overhangs also protect the softwood from rotting in the rain.

Rather than building a two-storey rectangular block set between parti walls, Ted built a parti wall right along the north boundary which shrank in thickness floor by floor. 3.3m south of the wall a line of concrete posts supports a long beam of Canadian Hemlock.

The roof spans from the parti wall across the beam. As the site was normally in operation for only one day in the week, the roof was made and water-proofed very early in the process. This made the site secure and dry for the protection of tools, materials and possessions.

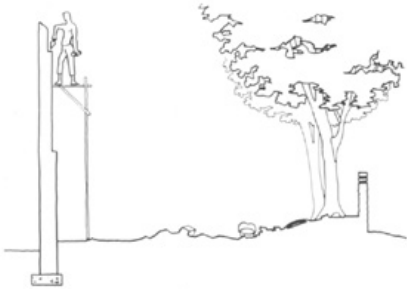
Most of the rest of the house was made of bolted softwood, dangled down from the completed roof and then glazed.

To the south of the house, a brick and concrete workshop forms an extension of a southern parti wall, the top of which makes a terrace. 'Indoors' is contained by sticks and glass, and 'outdoors' exists within the frame of the solid ground and two solid parti walls.

**Below:** Ted Cullinan, his wife Roz, friends and family members built the house in Camden Mews during two years of Sundays from 1963 to 1964. They moved in with their three children in 1964 and spent much more time finishing it.



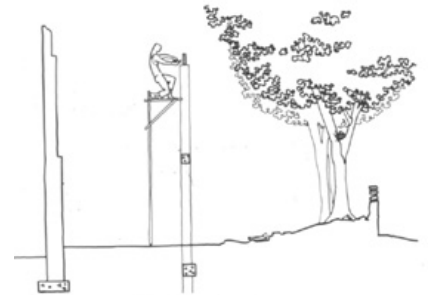
**CULLINAN  
STUDIO**



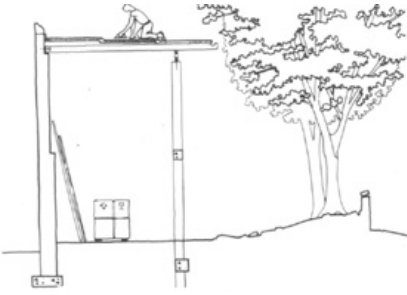
The parti wall...



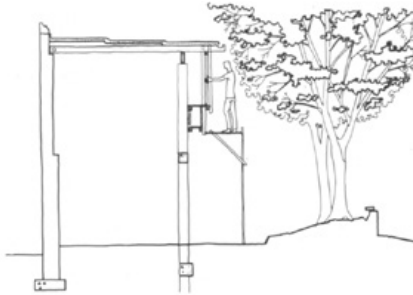
...a row of columns...



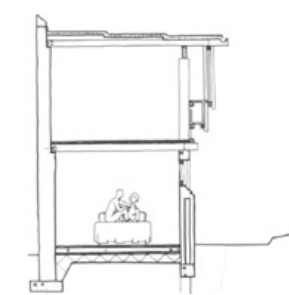
...beam added at the top...



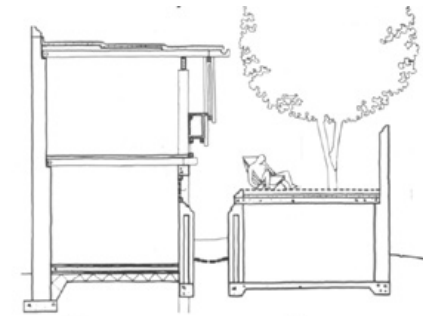
...the joists and roof...



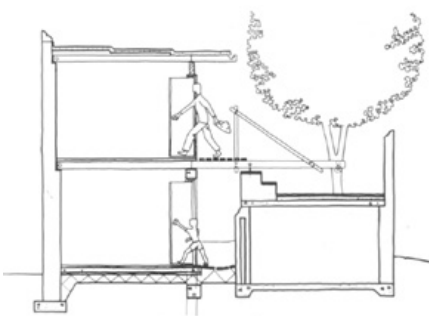
...hung cupboards and windows...



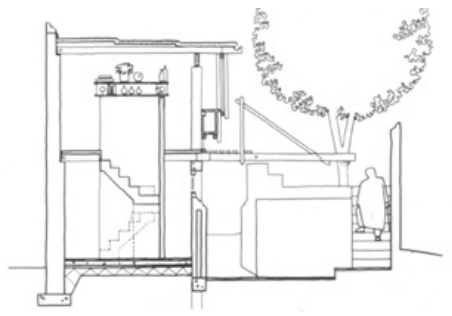
...first floor joist...



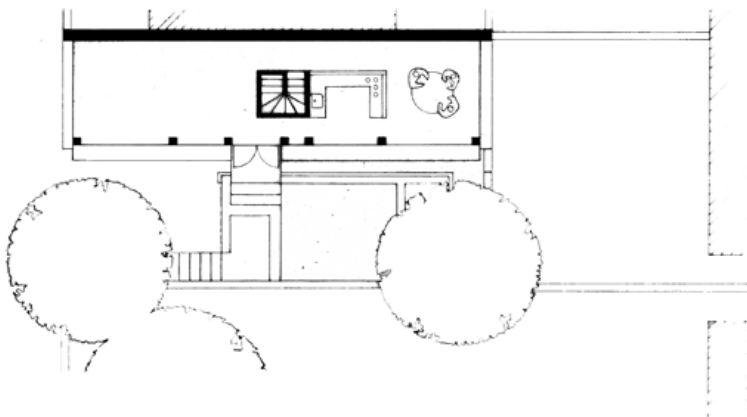
...wall to garage and workshop...



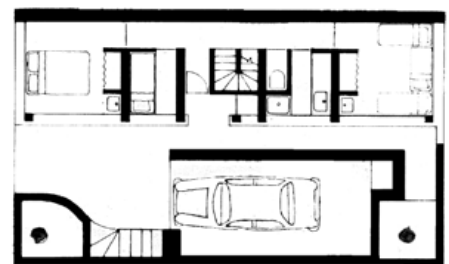
...public and private doors...



...approach by front steps.



First floor plan



Ground floor plan



