

**CULLINAN
STUDIO**

Cullinan Studio's driving purpose is to reconnect people with nature: for health and wellbeing, for a fairer more balanced society, and towards a sustainable future for us all.

As we face up to the climate challenge, it is vital to **use existing resources wisely**. Cullinan Studio is committed to mitigating the role that buildings and construction play on climate change and biodiversity loss. We have been a leader in sustainable design for over 50 years and we continue to engage in research and training toward **circular economy principles of zero waste**.

We promote a fabric first approach to reduce energy consumption and have **Certified Passive House Designers** so we can design projects that will meet your net zero carbon targets.

As a member of the Alliance of Sustainable Building Materials, we disseminate its research to **eliminate the use of toxic materials** and are part of a project looking at how to **reduce the use of plastic** within the construction industry.

“The design of buildings is a social act”

We are driven by the belief that a building's potential is maximised when the **interests of all stakeholders are engaged** and cohere with the goals of the project.

As an employee-owned practice, **our co-operative culture** ensures that we are comfortable working in detail and depth with other organisations and professionals, and our co-operative structure ensures our partners are equally invested in success.

The projects shown here are designed with the common goal of creating **happier, healthier more socially connected places**.



Clore Learning Centre, RHS Garden Hyde Hall, Essex

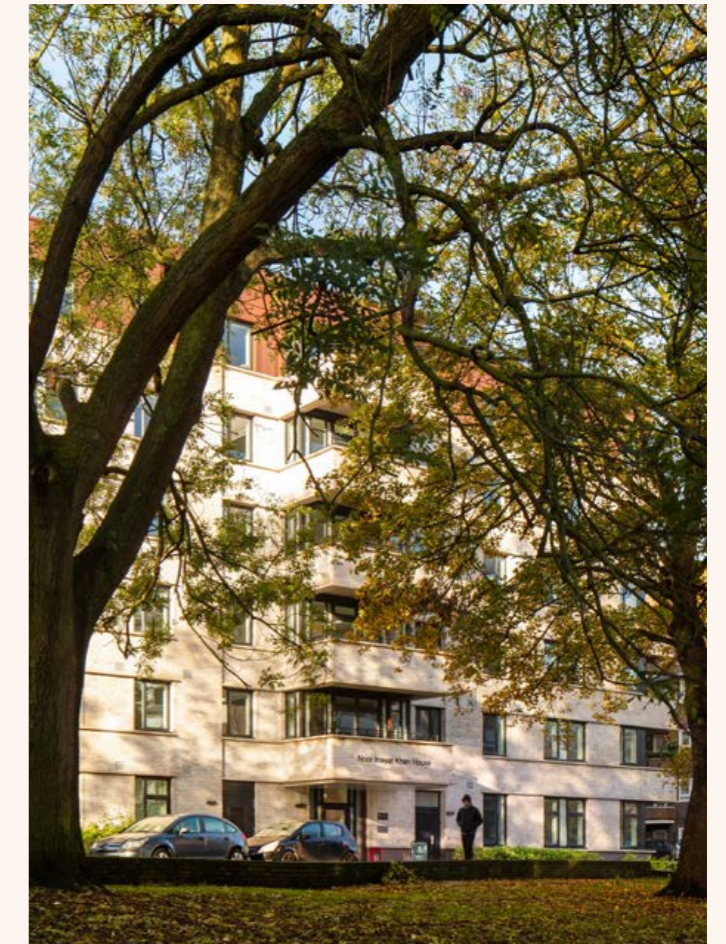
HOMES & COMMUNITIES



Imagine an estate regeneration that respects the needs of a close-knit community

Project: Maitland Park Estate, London Borough of Camden
Client: Camden Council

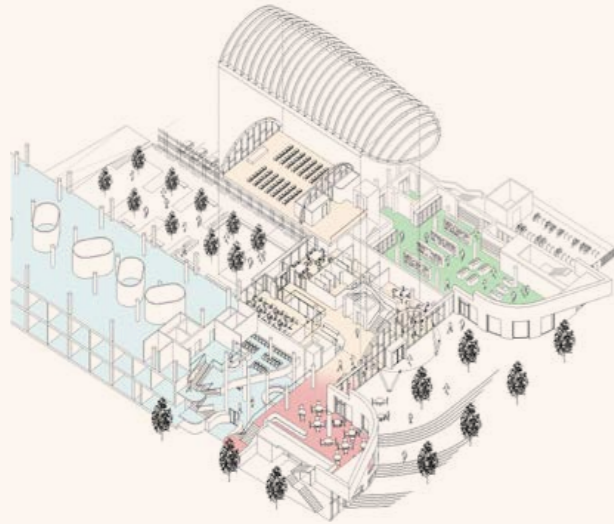
The London Borough of Camden has been considering various ways to meet its commitment to deliver better homes and sustainable communities by raising finances from building new homes on small plots of land. Through thorough consultation and feedback sessions with residents, we showed how their concerns were being listened to and addressed, leading to complete support for a much more extensive redevelopment than had initially been anticipated. Our designs create a vibrant heart for the community with 119 new homes in an enhanced landscape setting and a new community hall and garden.



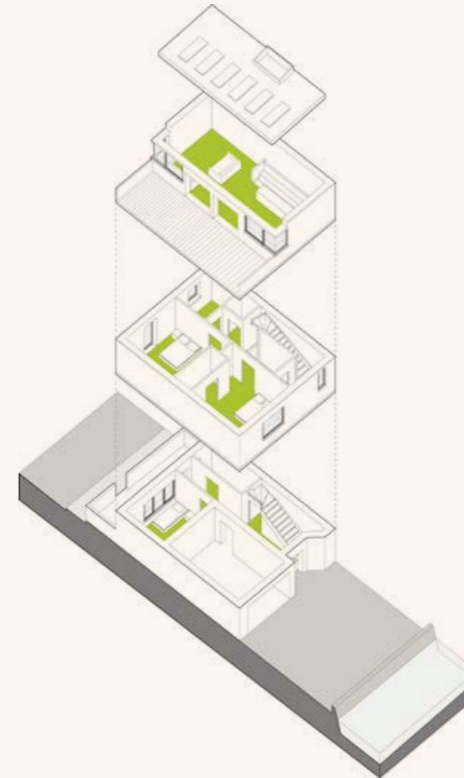
Imagine the people of a London estate driving its regeneration

Project: Stonebridge Estate, London Borough of Brent
Client: The Hyde Group

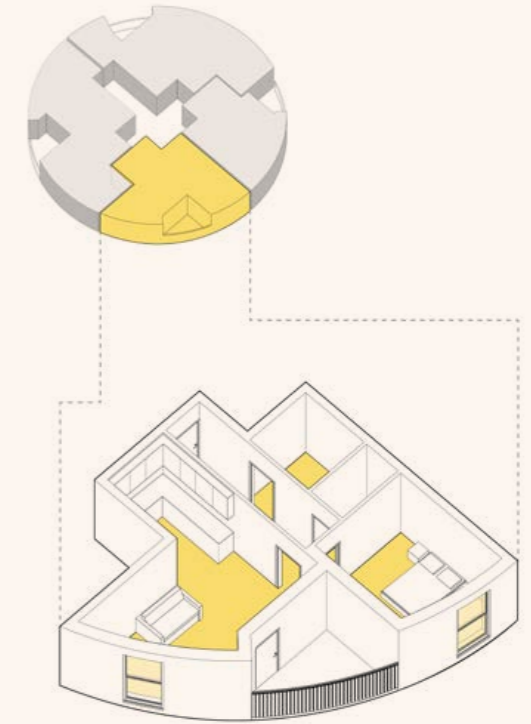
A brilliantly led Housing Action Trust (HAT) put its faith in the people of Stonebridge Estate to drive its regeneration. We designed for them an economically self-sustaining mixed-use community centre that includes 59 flats, a health centre, a community hall, a small supermarket and a café, with rental value recycled back into the community to support educational and employment programmes. The 'Spring' development followed, gathering 117 social rent and private sale homes around a shared garden. The buildings are designed to ensure sunlight reaches private and public open spaces.



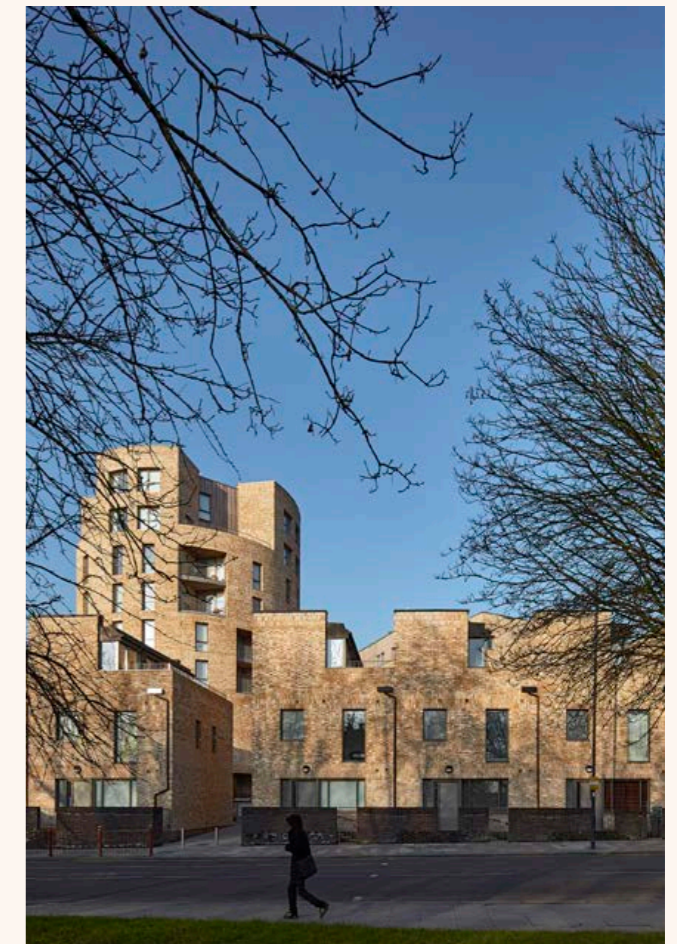
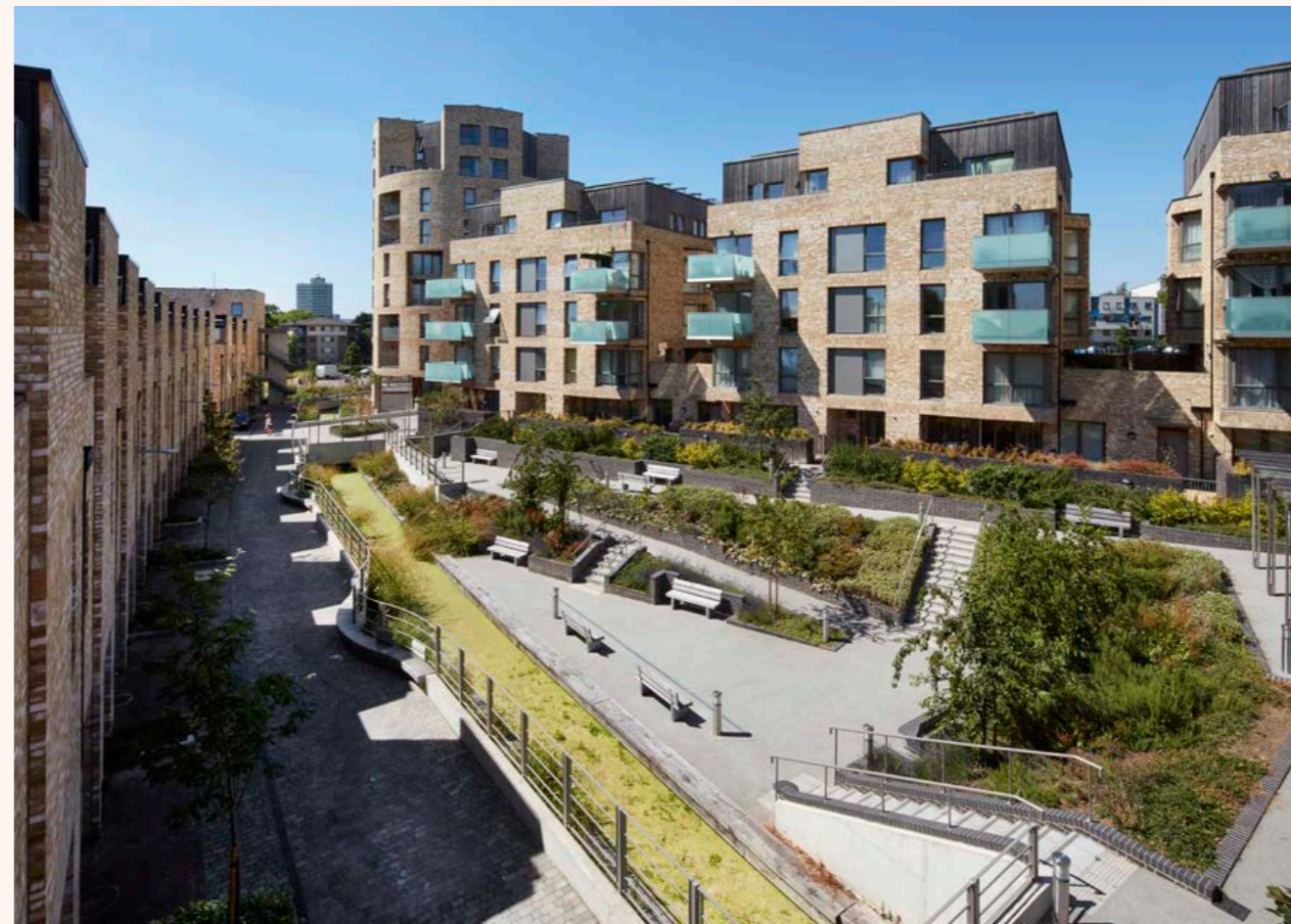
Mixed-use Stonebridge Hillside Hub



Upside-down mews houses keep living spaces up and away from the noise of the road, opening onto terraces that catch the sun



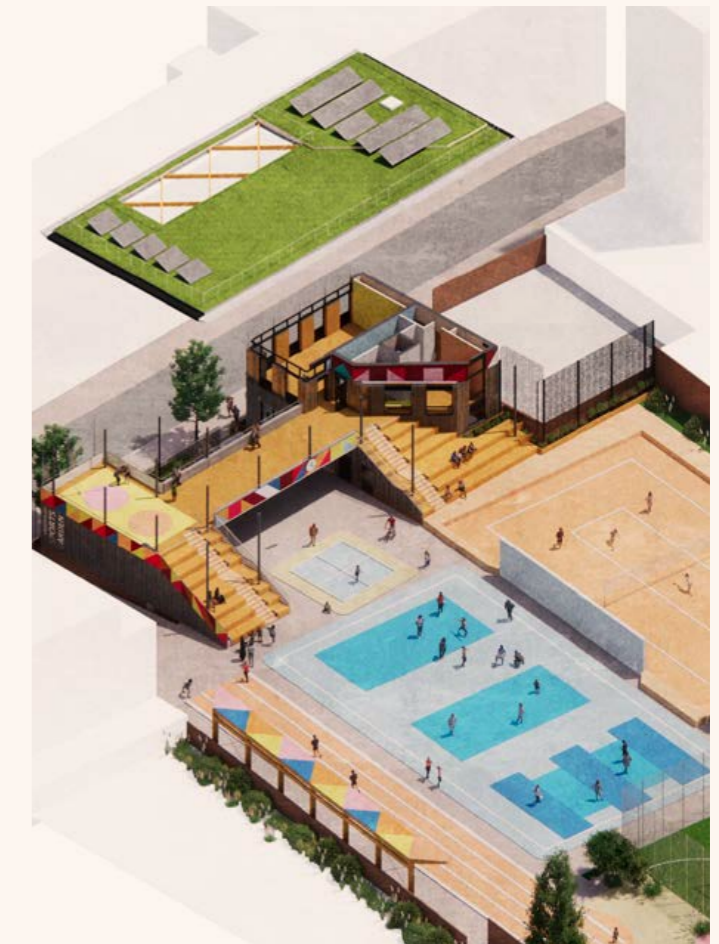
The circular plan of the nine-storey 'rotunda' softens its impact. Affordable homes are created through a simple cruciform internal plan.



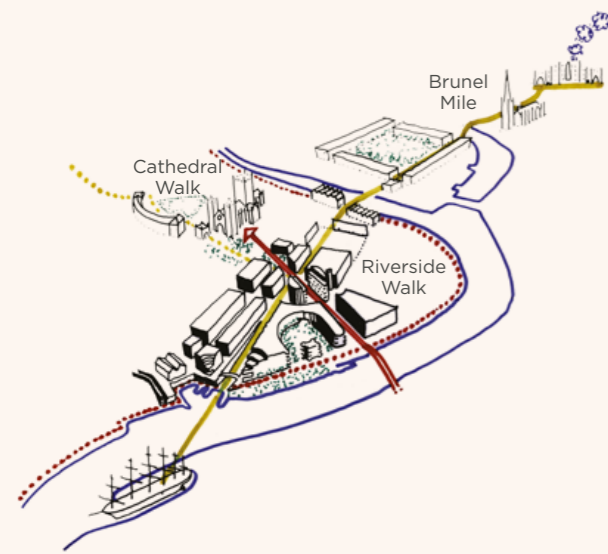
Imagine a healthy lifestyle that's accessible to everyone

Project: Marlborough Sports Garden,
London Borough of Southwark
Client: Bankside Open Spaces Trust

The Marlborough Sports Garden is a rare outdoor space providing much-needed access to physical activity and leisure pursuits. A new community hub building will help Bankside Open Spaces Trust (BOST) to realise its vision of a state-of-the-art mixed sports facility that is freely available to everyone, but in particular local school pupils and those who are living in poverty. BOST and the design team are united in their ambition to make the hub as carbon neutral and circular economy compliant as possible, from the materials used to build the community facility, to the operation of the café and sports activities.

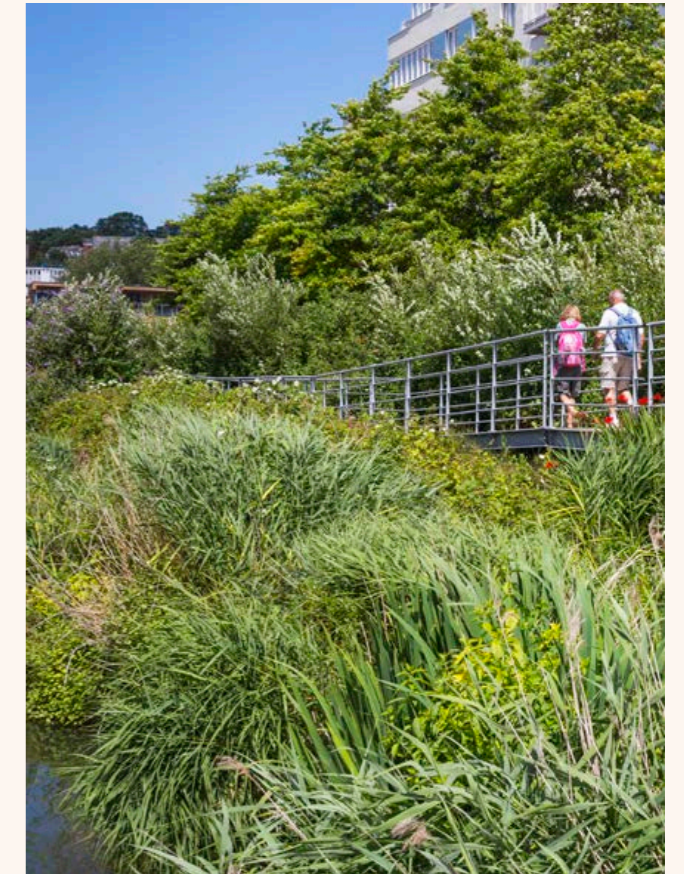


Imagine nature-rich pedestrian-friendly streets linking city landmarks

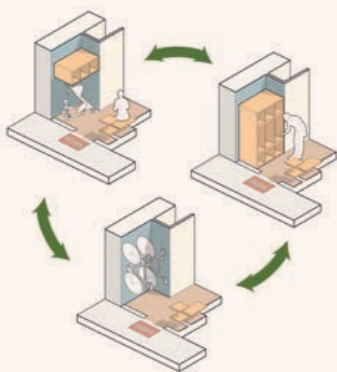
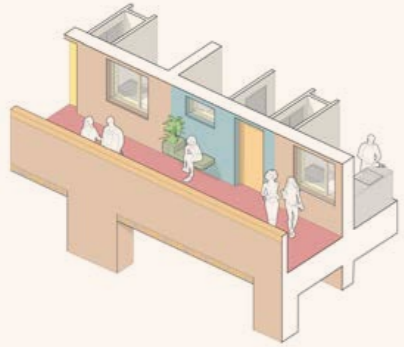


Project: Bristol Harbourside, Bristol
Client: Crest Nicholson Regeneration

Our masterplan for Bristol Harbourside has transformed this brownfield site into elegant and enjoyable places to live, work and relax. Organised around three crossing pedestrian routes that link local landmarks, the scheme successfully restores connections with the rest of the city through generous spaces with impressive views, carefully designed buildings and by opening up the waterside - now a popular pedestrian commuter and jogging route. Community was at the heart of the strategy for the development of the Harbourside and the masterplan was designed with extensive public consultation with local people, businesses, politicians, the Cathedral and numerous interested cultural groups across the city.



Imagine truly affordable homes, resilient to increases in energy pricing



Diagrams exploring how the more mundane moments in life can be elevated by design

Project: Waltham Forest Net Zero Carbon Developments
Client: Sixty Bricks

The London Borough of Waltham Forest and Cullinan Studio share a common goal of urgently addressing both the climate crisis and the housing crisis with affordable, low-energy homes. We are coordinating three Passivhaus and Net Zero Carbon projects - Osborne Grove, Vicarage Road, and the Chingford Library Hub. Chingford Library will be transformed to provide improved community facilities including a new library cafe and assembly hall situated within a wider landscaped setting. Operational Net Zero housing both provides new homes and supports the new public facilities



Imagine high quality, zero carbon homes for a diverse population

Project: Northolt Estate, London Borough of Ealing
Client: Ealing Council and Broadway Living

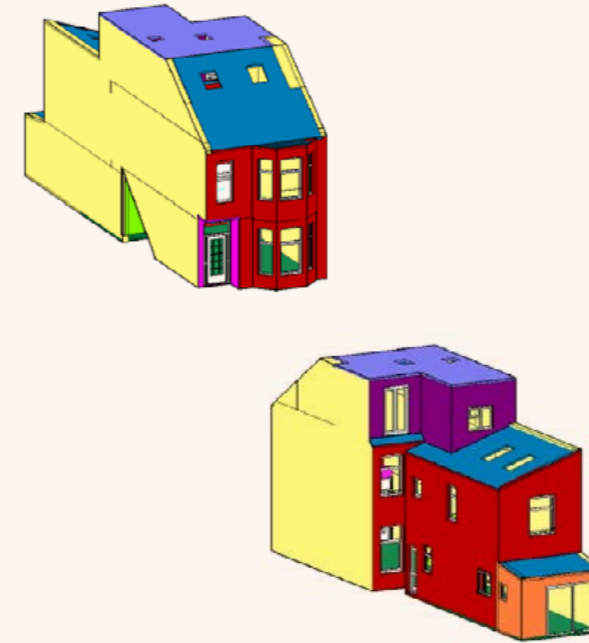
Excellence in sustainable design lies at the heart of high-quality placemaking. This mixed-tenure development will provide 165 affordable homes designed to Passivhaus standards within strict budgets. At every opportunity, access to nature has been given significant importance; as such, the scheme has achieved a Biodiversity Net Gain of 10.96% for habitat, and >100% for hedgerows, and an urban greening factor of 0.4. The housing is both Net Zero Carbon and Passivhaus, with an embodied carbon level of 590 kgCO₂e/m² below the RIBA 2030 target of <625 kgCO₂e/m².



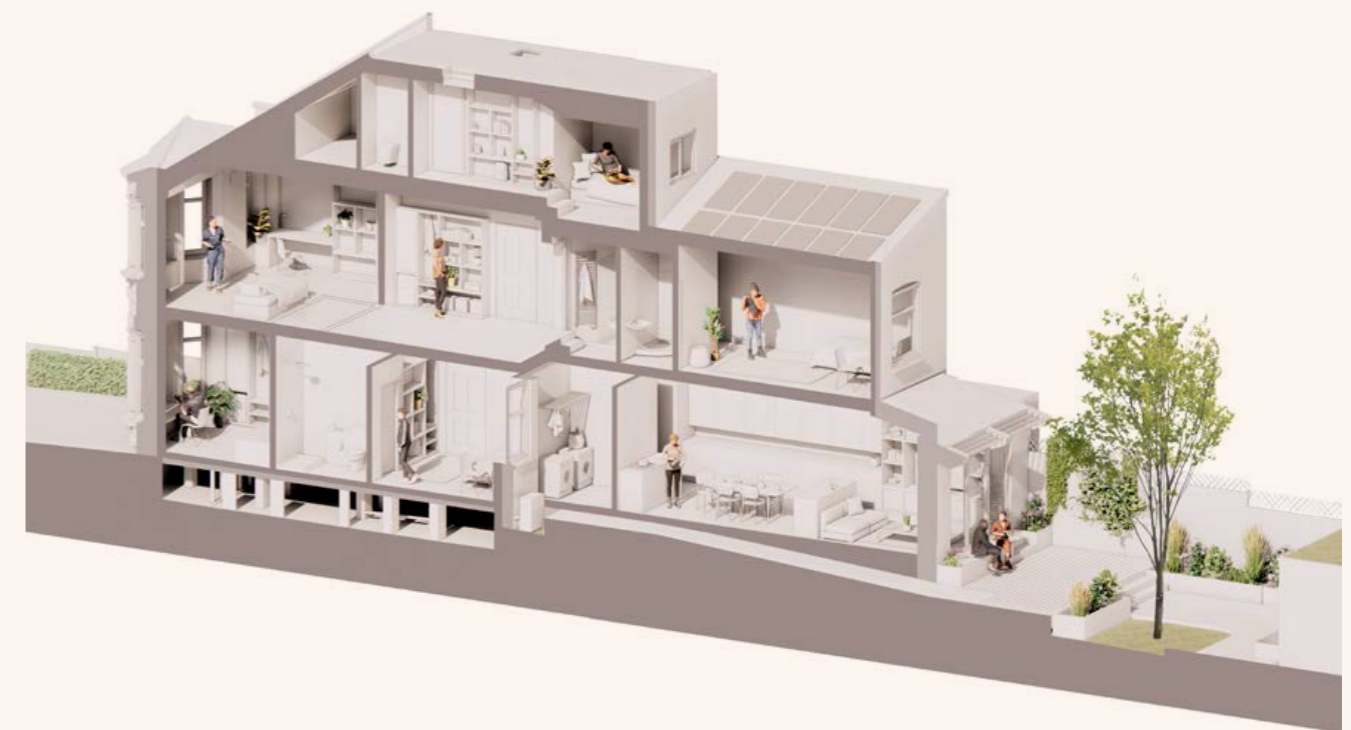
Transforming homeless support through innovative housing

Project: Hostel Retrofit, London Borough of Waltham Forest
Client: Branches

Branches, a charity offering hostel accommodation to single homeless individuals in Walthamstow, is enhancing their support by retrofitting a c.1900 house for more independent living. The project includes reconfiguration of internal arrangements to provide six-bed ensuite rooms, communal spaces, and an office for ongoing support, with a focus on energy efficiency. Upgrades like Air Source Heat Pumps, MVHR, robust material finishes, and rooftop PVs are included. The Passive House Planning Package (PHPP) was used to assess and report on energy improvements to meet Branches' desired energy targets.



PHPP Model of the existing house - the existing baseline PHPP output has been calculated using estimated U-values based on assumed buildups of the existing building elements based on the 3D digital measured survey and our visual inspection.



Imagine giving all the residents of an existing estate access to its restorative green heart

Project: Eastfields Estate, London Borough of Merton
Client: Clarion Housing Group

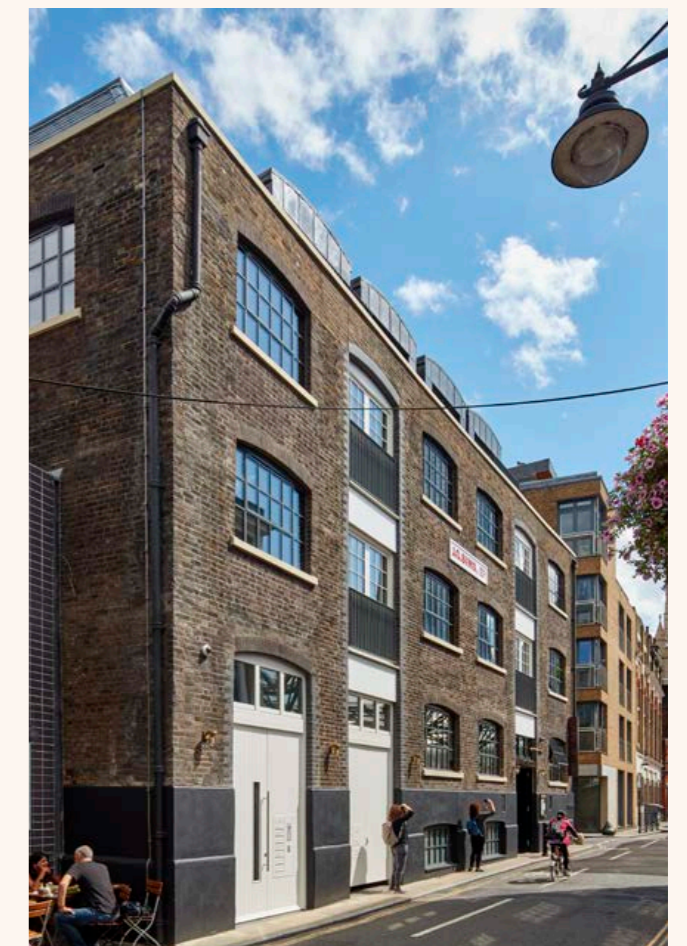
Designed with extensive stakeholder consultation, our concept for the renewed estate turns it inside-out, replacing a monolith perimeter building with a series of buildings that frame shared spaces, acknowledge long views and vary in scale to create a lively layering in silhouette. The mixed development doubles density from 400 to 800 homes, whilst enhancing townscape qualities with three distinct character areas. New lanes lead into the site creating smaller scale mews streets that provide the majority of family homes. A central linear park provides a major connection through the estate as well as a place to relax, dwell and play.



Imagine creatively rethinking old buildings for new uses

Project: Winchester Square, London Borough of Southwark
Client: Private Developer

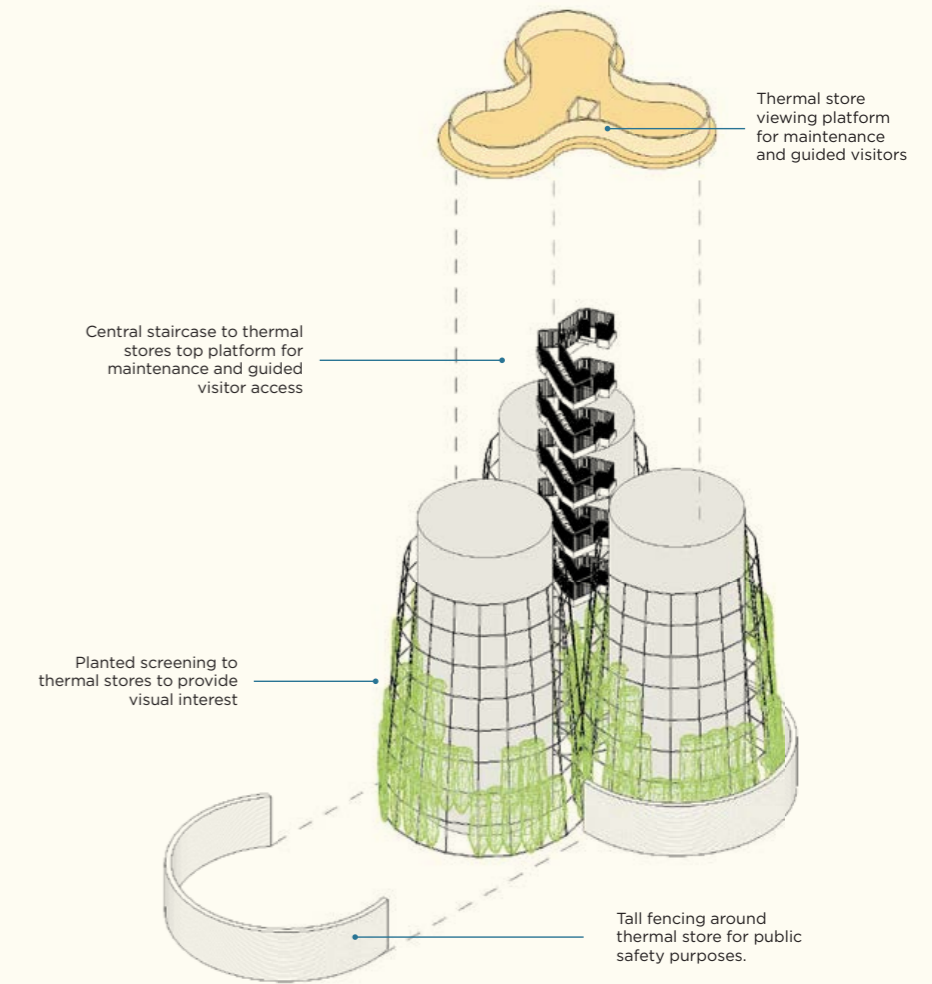
The reconstruction of Winchester Square has re-defined an historic London street with high-quality, contextually-driven, modern developments supporting well-planned apartments as well as office and commercial use. Close to bustling Borough Market, the masterplan includes the preservation of Roman remains and the mediaeval Winchester Palace, and the radical refurbishment of a Victorian hop warehouse. Built as individual and distinct projects, all phases of the masterplan share design principles yet don't suffer from the overbearing uniformity of some city centre developments.



GREEN INFRASTRUCTURE

Cullinan Studio services on energy projects

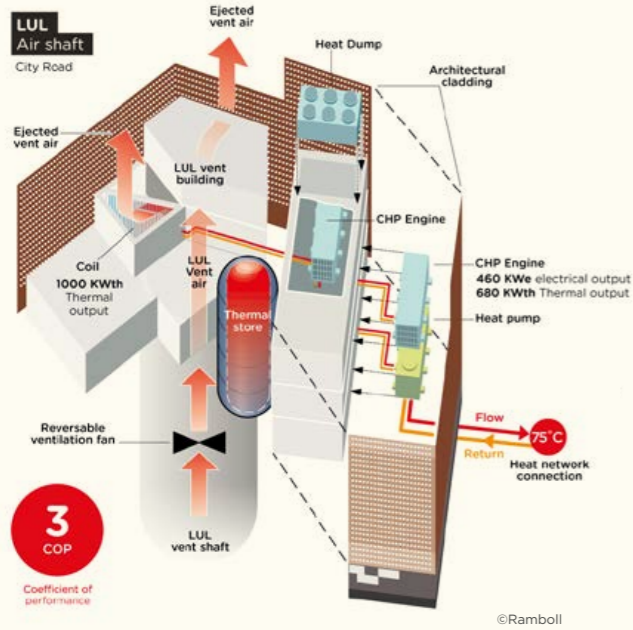
- Working with artists and community to integrate new technology with beautiful architecture and landscape
- Planning and carrying out stakeholder engagement
- Interpreting complex and new technology through easy to understand diagrams, visualisations, animations and fly-throughs or films
- Supporting social value objectives
- Preparing statutory applications for planning and heritage consent
- Providing full service architectural service for implemented projects
- We have in-house Certified Passive House Designers
- In addition we have the capability to design building fabric improvements to reduce energy demand as part of a decarbonisation strategy.



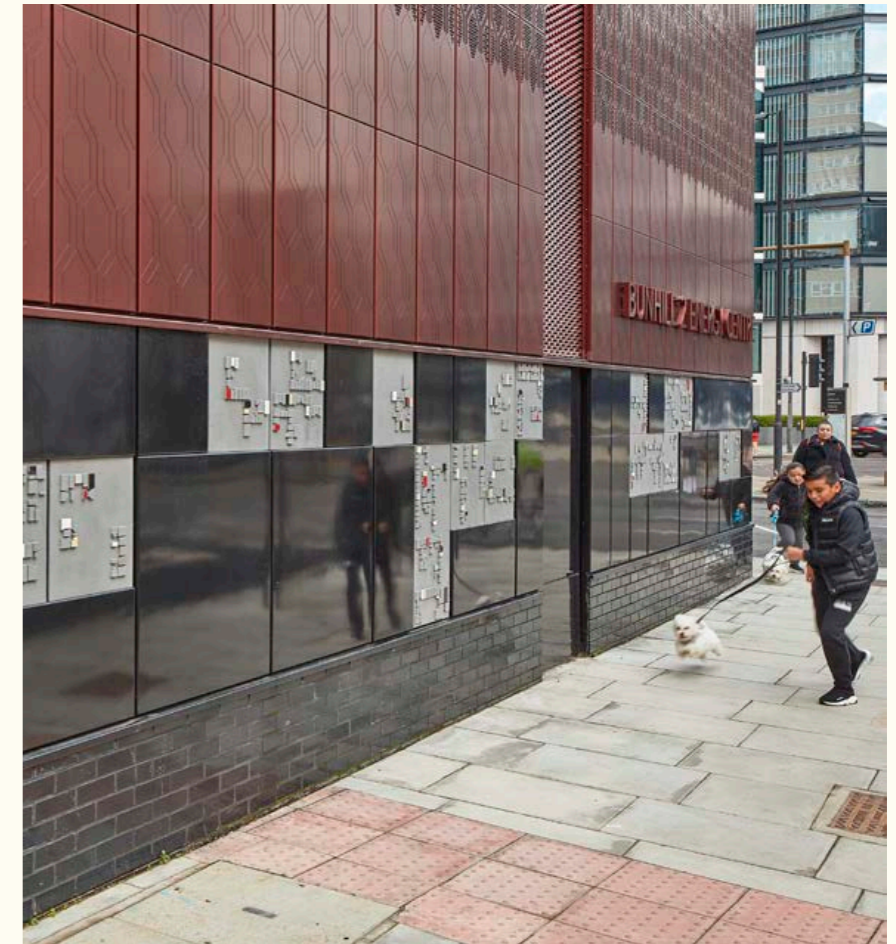
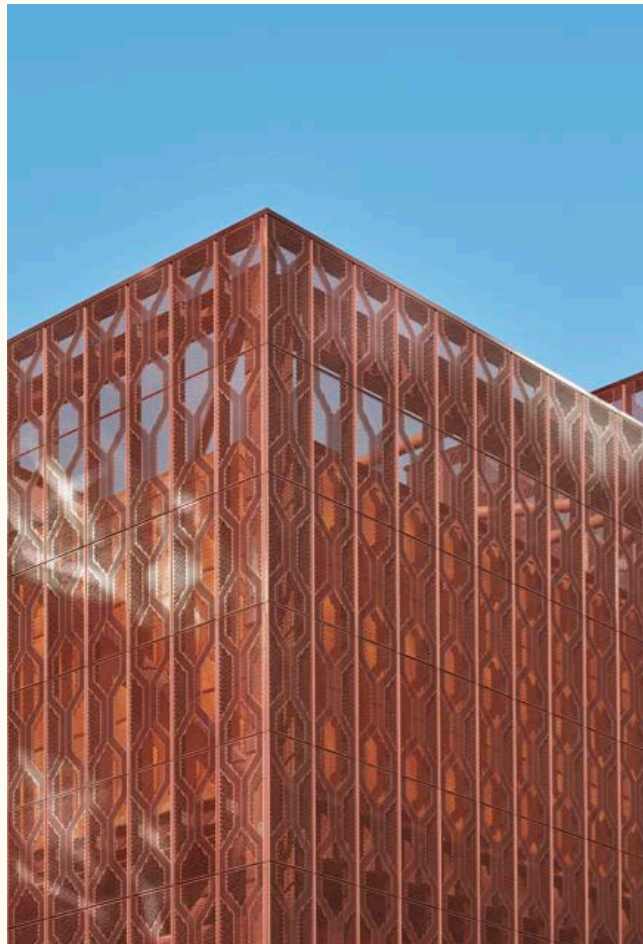
Imagine wasted heat from London's Tube heating local homes

Project: Bunhill 2 Energy Centre
Client: Islington Council

Bunhill 2 celebrates the necessary, expressing a language of civic industrial architecture that could begin to define this new typology of heat networks. It is the first scheme in the world to take wasted heat from an Underground train network to provide lower cost, greener heat to local homes, schools and leisure centres. Visual impact was minimised by composing the architecture to echo existing building lines, strengthen street edges and redefine the street corner. Bunhill 2 provides a blueprint for decarbonising heat in potential future schemes around the world, making cities more energy self-sufficient to become zero carbon.



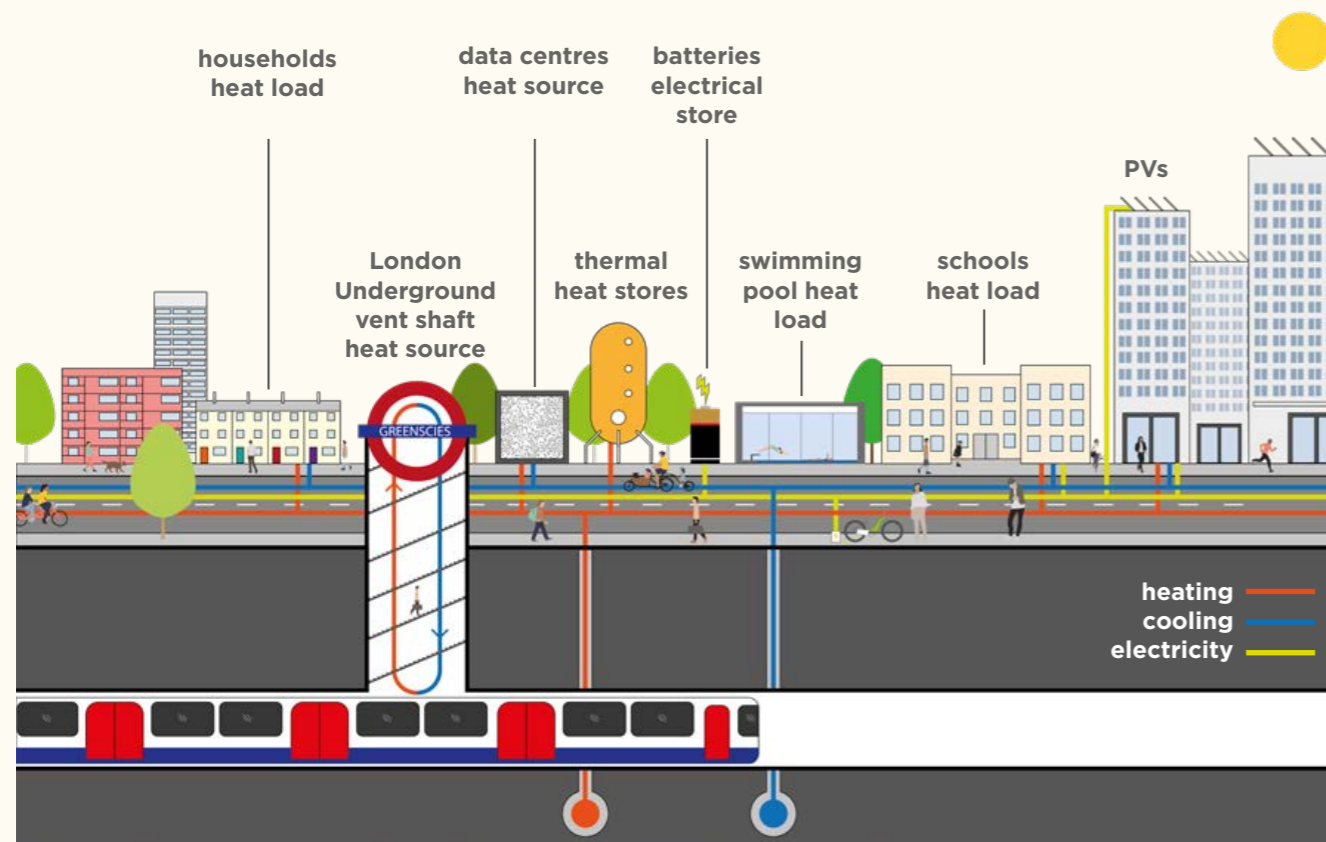
Map diagram showing the impact of Bunhill 2 Energy Centre.



Imagine if we could supply low cost, low carbon energy to everyone

Project: GreenSCIES
Client: Islington Council

This revolutionary smart, local energy system aims to reduce carbon emissions and tackle fuel poverty. It will serve more than 33,000 residents, 11,000 homes and 70 local businesses. Heating and cooling will be shared between buildings, and by connecting solar panels, energy storage hubs and installing electric vehicle charging points throughout the network, GreenSCIES offers an efficient and futureproofed way of meeting energy needs. As one of the project partners in the InnovateUK funded project, we have been exploring how this new infrastructure can have a positive impact on the streetscene, consulting closely with the community to seek local knowledge, thoughts and ideas through online workshops.



GREENSCIES SMART LOCAL ENERGY SYSTEM

REDUCTION IN ENERGY BILLS FOR BUSINESSES AND RESIDENTS

80% CARBON SAVINGS

11,000 HOMES
33,000 RESIDENTS

70 VERY DOMESTIC

42 ENERGY CENTRES
IMPROVED AIR QUALITY

7.4 KM PIPEWORK

REDUCTION IN ENERGY BILLS FOR BUSINESSES AND RESIDENTS

80% CARBON SAVINGS

IMPROVED AIR QUALITY

7.4 KM PIPEWORK

42 ENERGY CENTRES

Virtual flyers for community consultation explaining the benefits of a smart local energy system

Holistic mapping to aid integration of heat network with historic and natural context



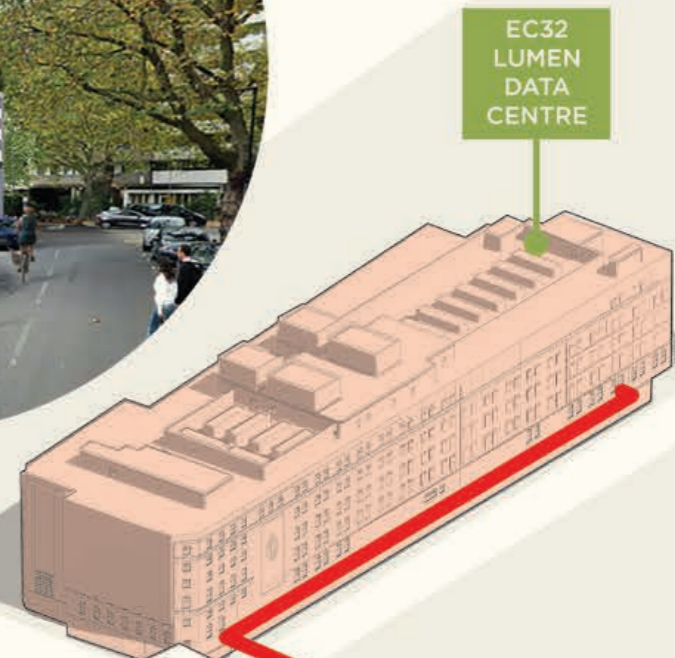
SPA GREEN ESTATE ENERGY CENTRE



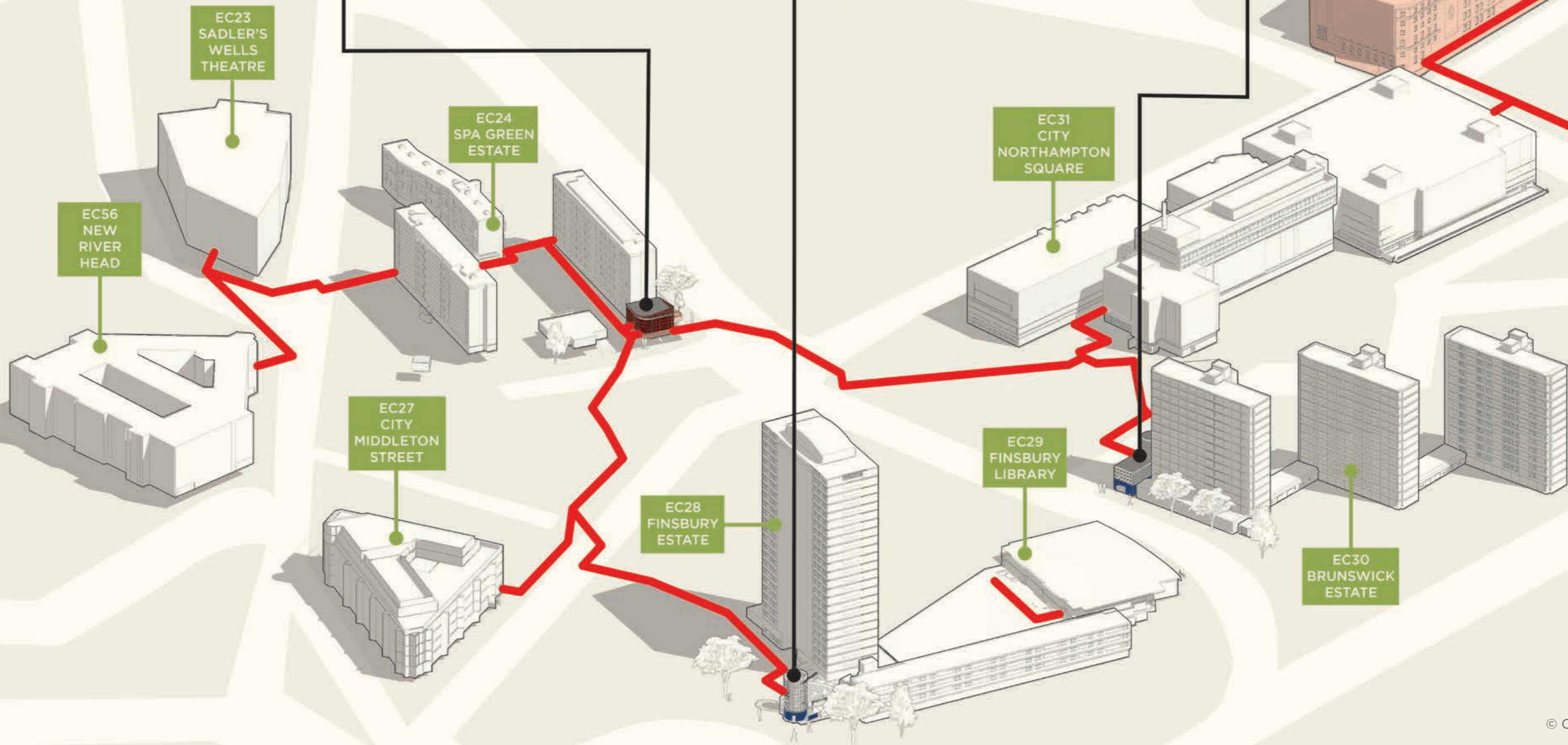
FINSBURY ESTATE ENERGY CENTRE



BRUNSWICK ESTATE ENERGY CENTRE



EC32 LUMEN DATA CENTRE



EC56 NEW RIVER HEAD

EC23 SADLER'S WELLS THEATRE

EC24 SPA GREEN ESTATE

EC27 CITY MIDDLETON STREET

EC28 FINSBURY ESTATE

EC31 CITY NORTHAMPTON SQUARE

EC29 FINSBURY LIBRARY

EC30 BRUNSWICK ESTATE

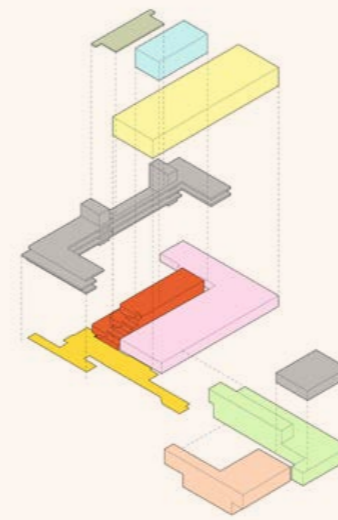
WORKPLACE



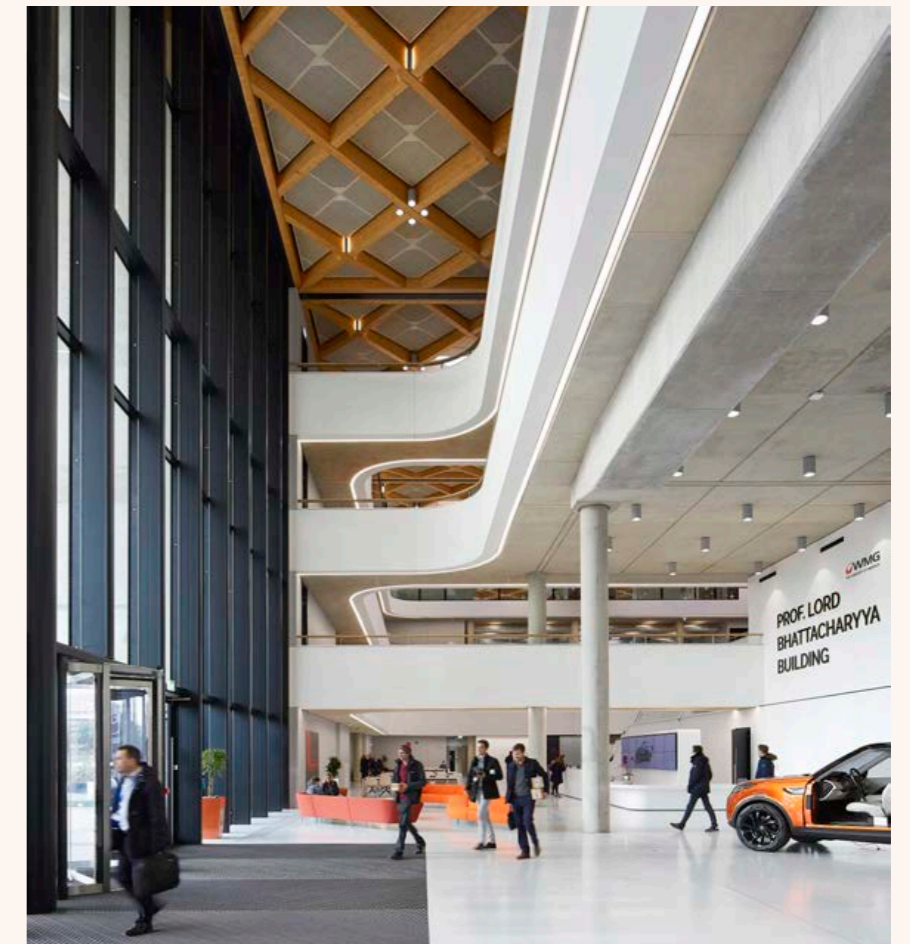
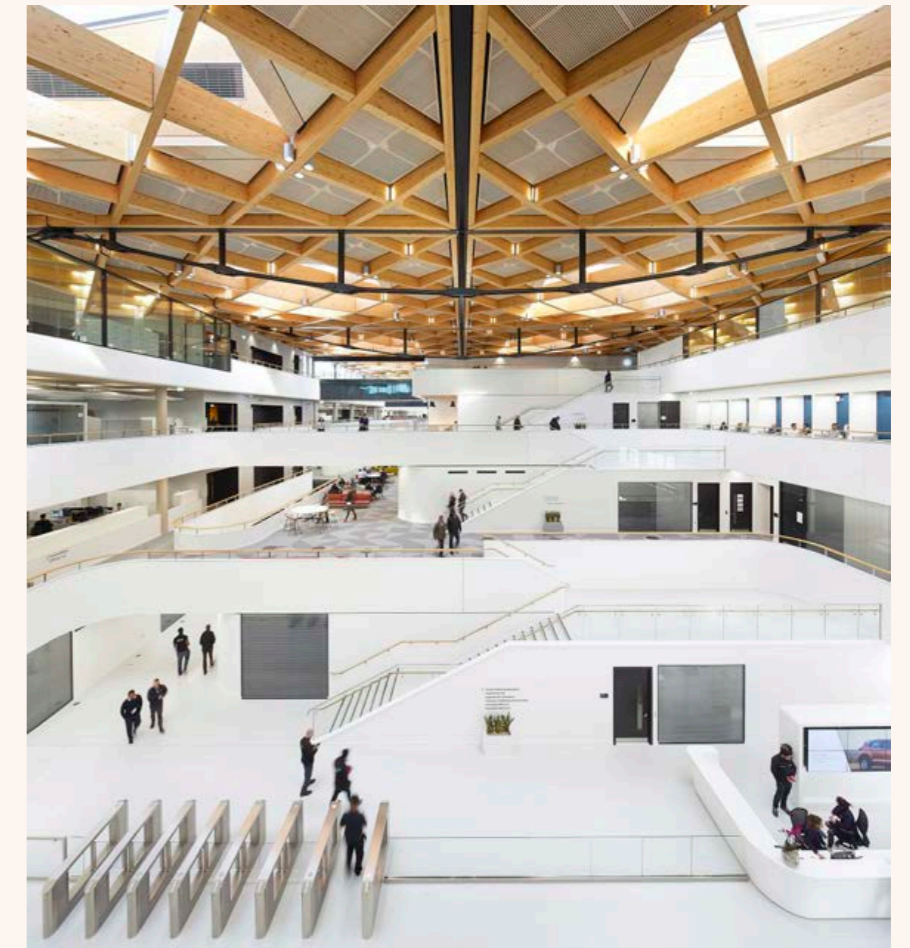
Imagine how nature could inspire the next generation of innovators

Project: National Automotive Innovation Centre (NAIC)
Client: Jaguar Land Rover, Tata Motors, WMG at the University of Warwick

The NAIC is one of the largest research and development centres of its kind in Europe, housing up to 1,000 staff under one of the largest timber roofs in the world. The client partners' vision was to create a collaborative environment in the heart of a university campus - fostering innovation across disciplines and inspiring a new generation of engineers. The NAIC offers a huge variety of work settings: the scale, complexity, and technical diversity of the range of spaces in the building is almost unparalleled, yet the NAIC has an overriding sense of calm and composure.



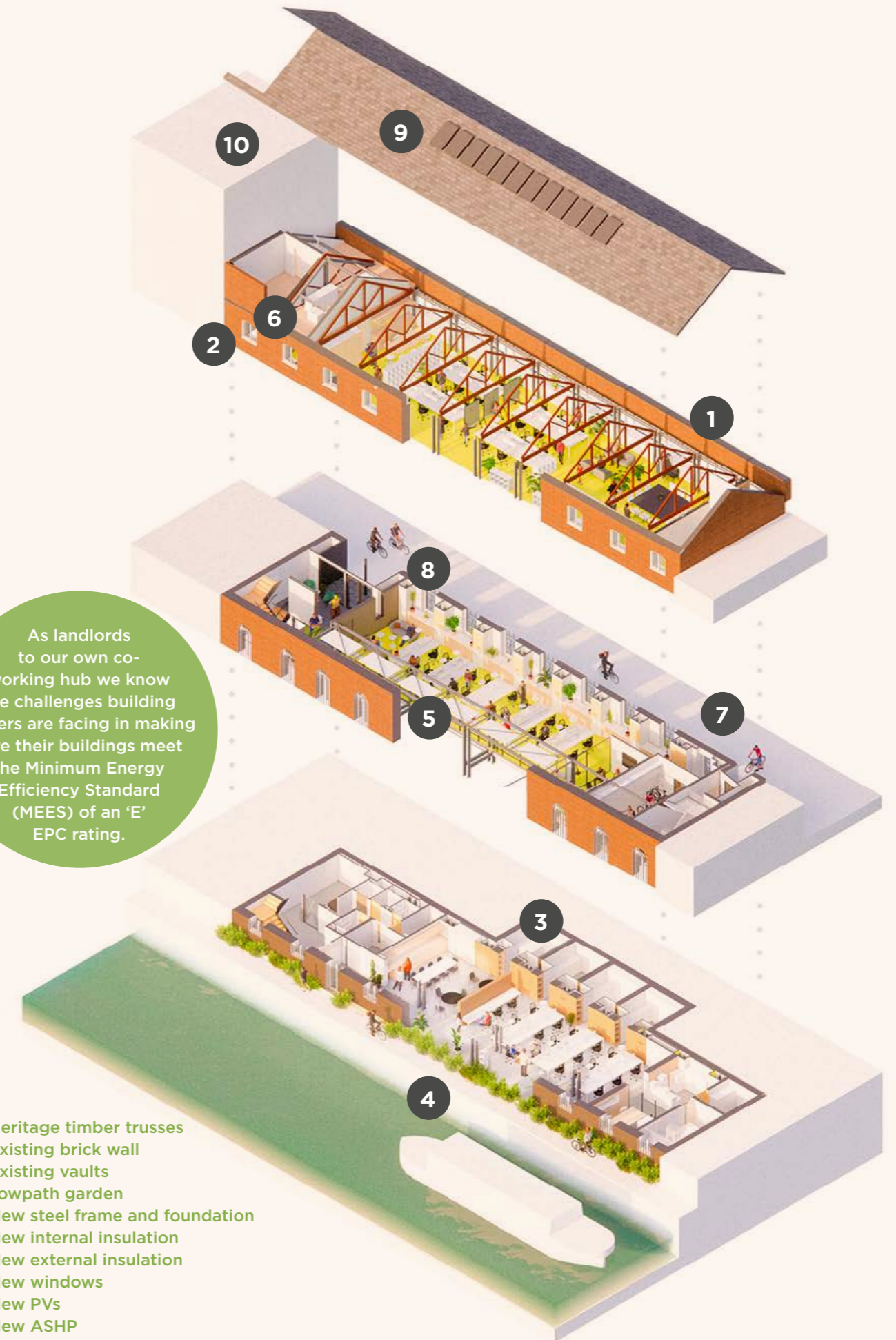
- Reception/Cafe/Exhibition
- Collaborative Hub
- Engineering Hall
- Research Lab
- WMG Student Projects
- Research Offices
- Design Halls
- Showroom
- Viewing Garden



Imagine how you might design your own workplace

Project: Foundry (Cullinan Studio HQ),
London Borough of Islington
Client: Cullinan Studio

This Victorian canal-side warehouse was in poor condition and required radical change to become our low-energy, low-carbon collaborative workspace. We took a fabric-first approach, retaining 80% of the existing building fabric whilst creating a naturally ventilated office. A new steel frame structure interacts with the existing Victorian frame and masonry, stabilising the building fabric, including the listed south wall and timber roof trusses. A void between canal-level and street-level floors unifies the studio and reveals the scale of the canal elevation's double-height windows, maximising views and daylight.



Transforming office space for hybrid working and modern demands

Project: Cambridge Student Services Centre Space Planning
Client: University of Cambridge Estates Division

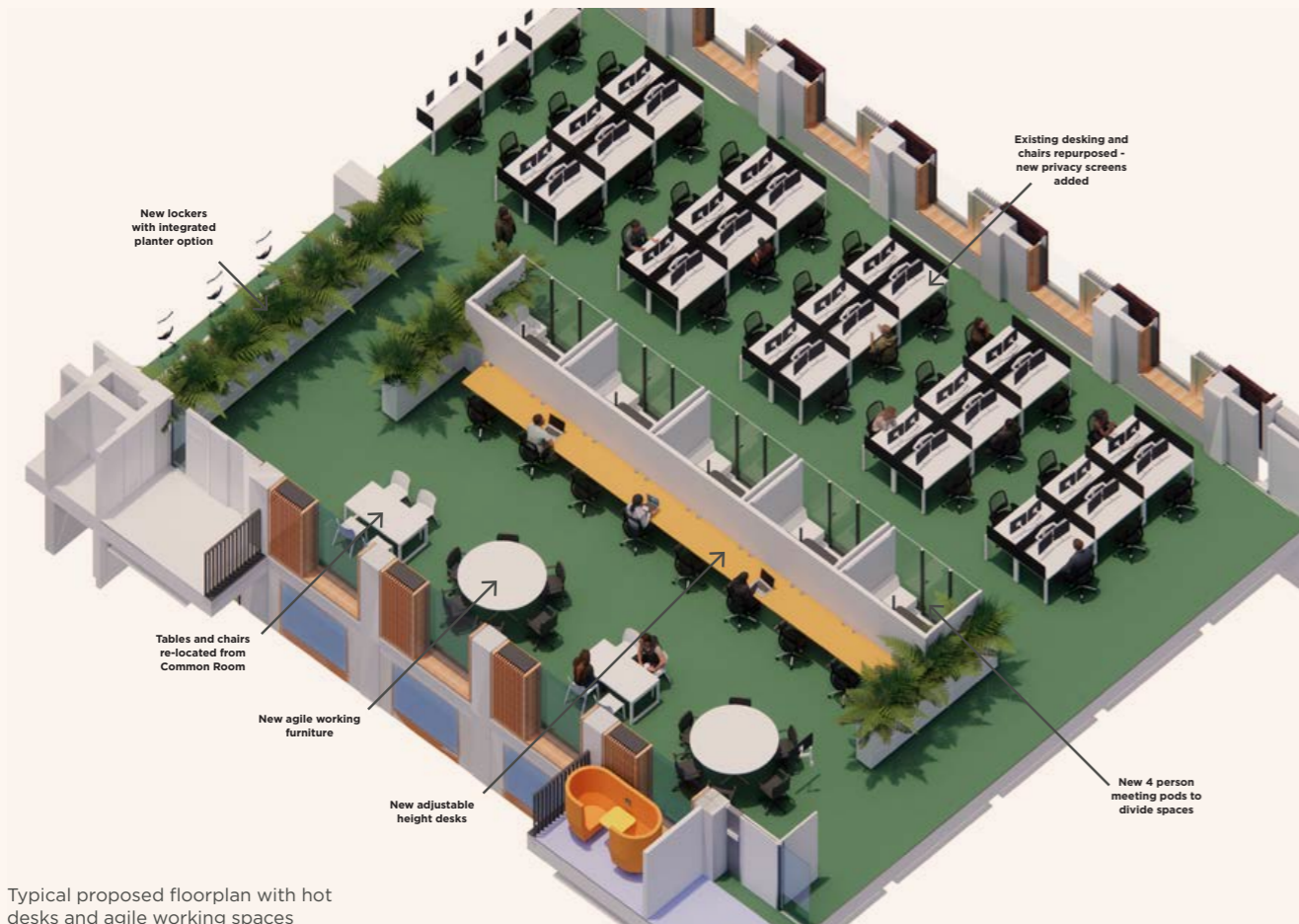
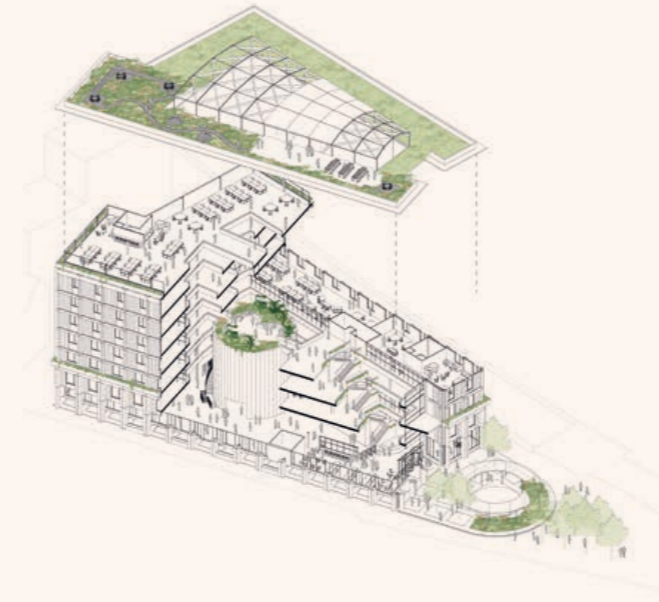
We have been working with the University of Cambridge Estates Division to address post-pandemic workplace challenges at their Student Services Centre (SSC); a complex of buildings including a Grade 2 listed structure. The redesign aims to support staff productivity and welfare while preserving the building's quality and maximising occupancy. The process included end-user surveys, building tours, workshops, online feedback on early designs, and stakeholders sessions, considering the growth of teams and operational issues.



Imagine a commercial city centre building providing a catalyst for healthy communities

Project: Arkwright Street
Client: University of Nottingham

Our proposal created a verdant heart with connections to digital, social and natural networks, where people could advance their individual and collective potential. The building expresses the tectonics of a low-carbon, biodiverse architecture that presents itself positively to the city in all directions with a rhythm of robust natural materials and greening. Inside is flexible workspace around bespoke innovation spaces, with a Digitalarium, topped with a winter garden, as the building's centrepiece, for interaction and education.



Typical proposed floorplan with hot desks and agile working spaces



Imagine an inspirational working environment

Project: Max Fordham Office Fit-Out,
London Borough of Camden
Client: Max Fordham

This Victorian canal-side warehouse was in poor condition and required radical change to become our low-energy, low-carbon collaborative workspace. We took a fabric-first approach, retaining 80% of the existing building fabric whilst creating a naturally ventilated office. A new steel frame structure interacts with the existing Victorian frame and masonry, stabilising the building fabric, including the listed south wall and timber roof trusses. A void between canal-level and street-level floors unifies the studio and reveals the scale of the canal elevation's double-height windows, maximising views and daylight.



Imagine designing an HQ for a global charity before they know where they're going

Project: Global Witness Workplace
Client: Global Witness

Global Witness is an NGO which aims to uncover corruption through investigative journalism. Shared values of sustainability, ethical sourcing and employee well-being led them to choose us to carry out a consultation and define a strategic brief for their future workplace. We worked with Global Witness to interrogate potential properties to help them negotiate viability and lease terms. This included investigating four existing properties in the city of London by testing spatial layouts and scoping opportunity for transforming space to meet healthy building targets.



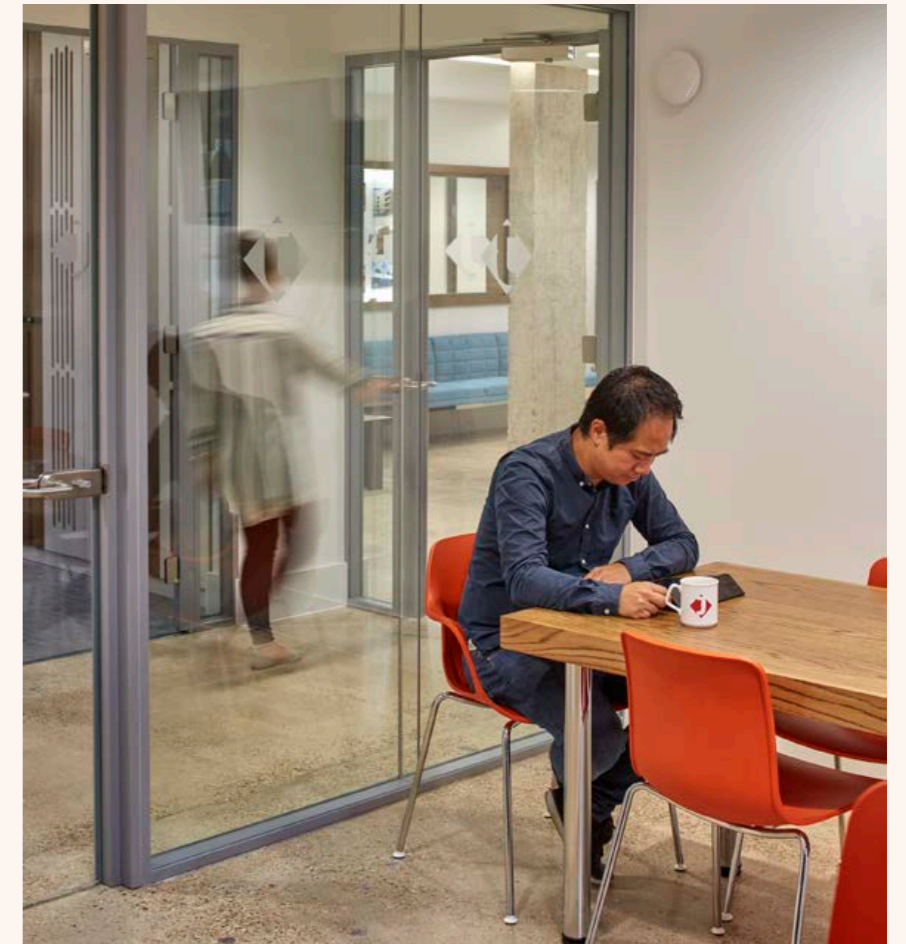
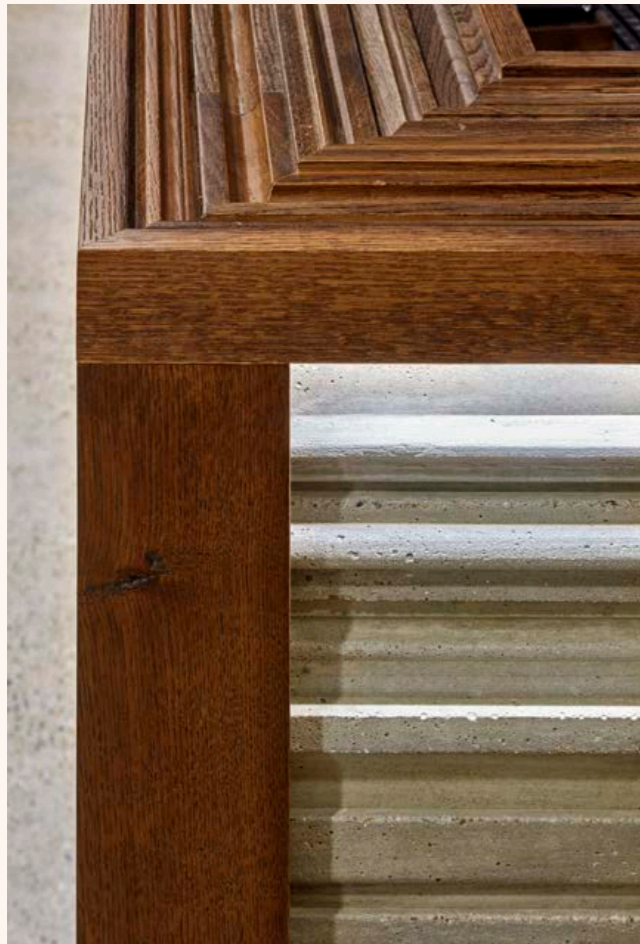
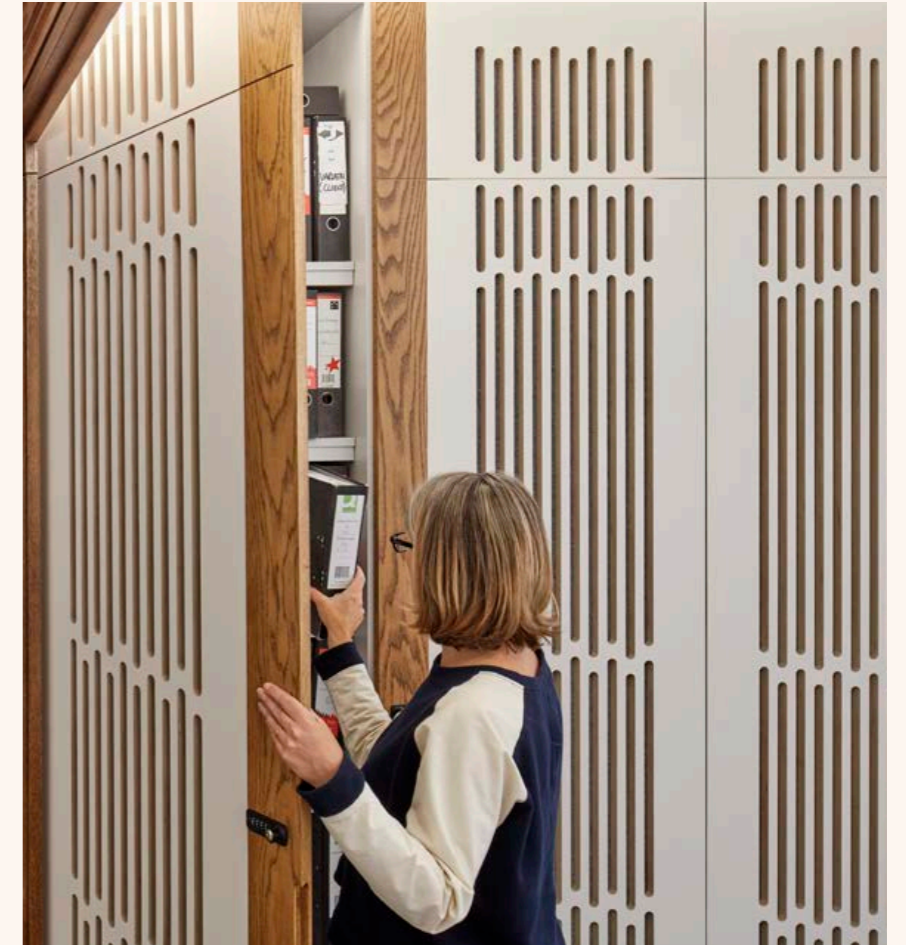
Wide ranging consultation aimed to cut across the organisation by using bespoke methods of engagement. Campaigners were set a creative task using their skillset – utilising a polaroid camera to investigate their workplace and report headline issues.



Imagine an office that celebrates family values

Project: Office Fit-Out, London
Borough of Hackney
Client: Jerram Falkus Construction

Our design for Jerram Falkus' remodelled office in Shoreditch brings natural light and ventilation into the deep plan building, whilst providing a variety of work settings. Internal windows create connecting views through the offices, meeting rooms and reception area. This sense of openness reinforces their family culture and their commitment to wellbeing in the workplace. Reclaimed objects were lovingly restored and re-purposed, local companies were found to design and make the lights and furniture, and street artists decorated large wall in the joinery workshop.

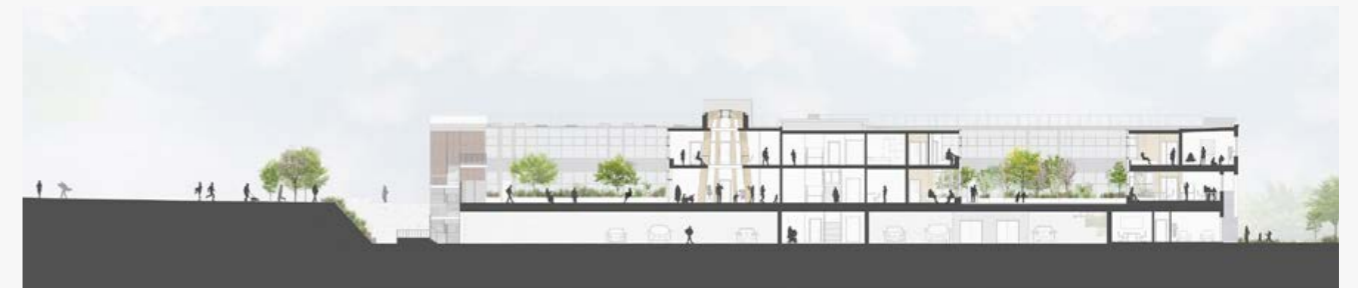


HEALTHCARE

Imagine how nature could benefit young people's mental health

Project: Alder Hey Community Cluster, Liverpool
Client: Alder Hey Children's Hospital

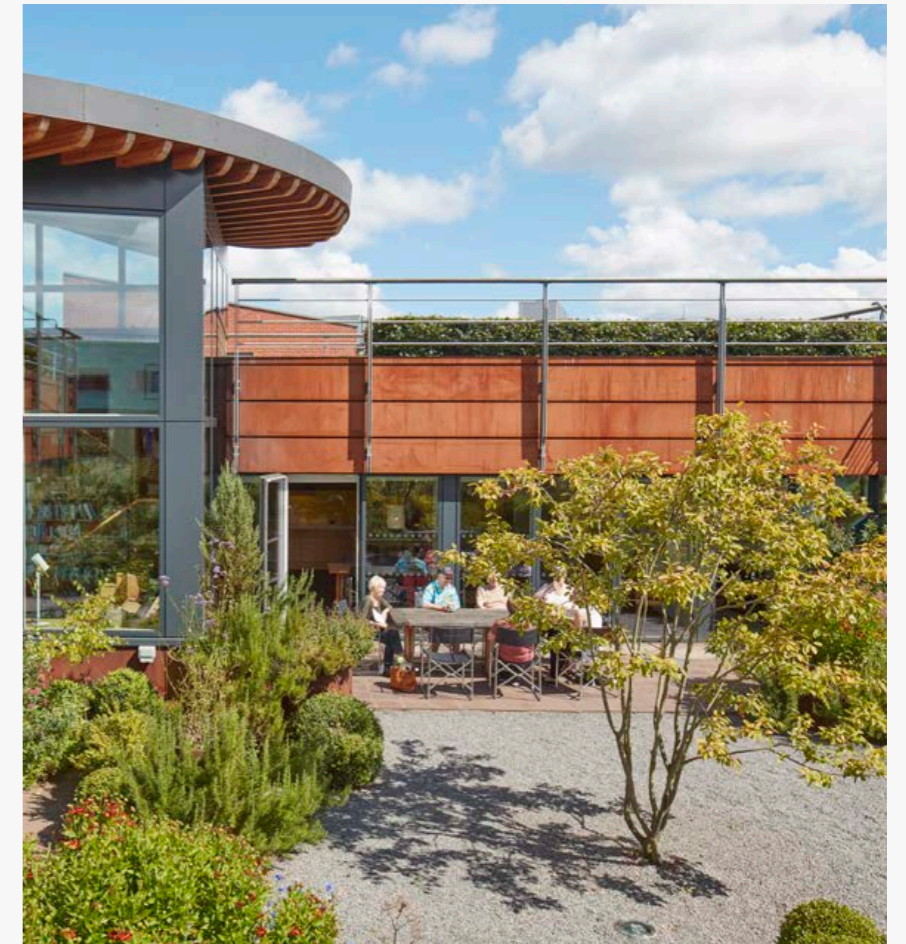
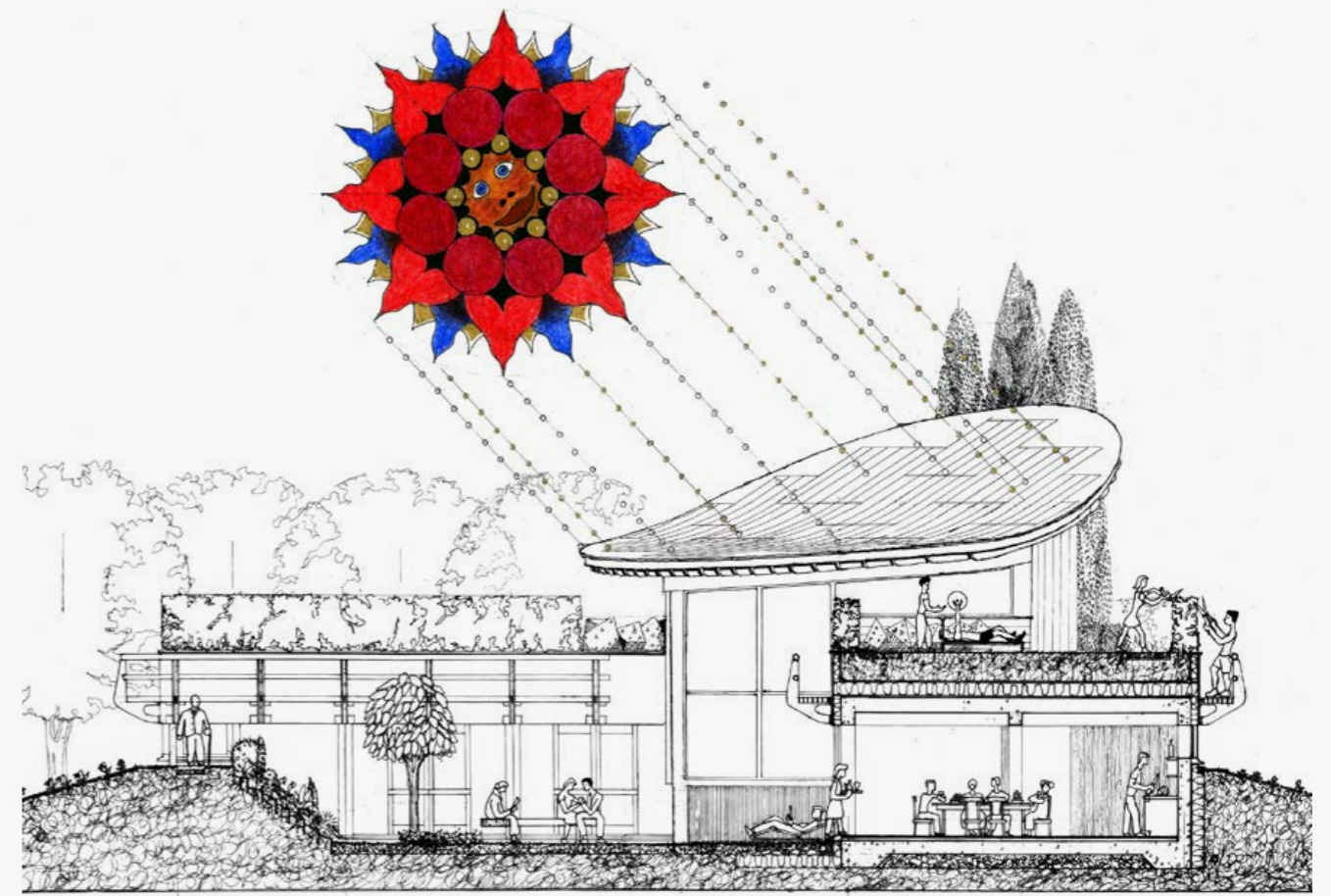
Contact with nature has proven outcomes for the recovery of those with mental health or behavioural issues. The new Community Cluster stands as an innovative, joined-up approach to the treatment of physical and mental health for children and young adults. Cloistered routes surround two courtyard buildings, where clusters of consulting rooms, bedrooms and day spaces are gathered around an outdoor room - a garden offering activities, daylight and fresh air. Internally, timber is expressed throughout, chosen for its warmth, smell and feel, and its environmental and wellbeing benefits.



Imagine how nature could offer a real sense of calm to people in their time of need

Project: Maggie's Newcastle
Client: Maggie's

In challenging times, the charity Maggie's is there to offer social, emotional and practical support to people affected by cancer. We believe that giving patients a way to connect with nature is fundamental to wellbeing: the garden at Maggie's Newcastle embraces the building so that it can be seen from every corner inside, whilst enclosing a sheltered south-facing planted courtyard. Maggie's Newcastle is designed to allow visitors a choice of environments; a mix of private and more social spaces. The use of natural materials creates a warm and tactile effect, going against the grain of institutional convention.



Imagine a community for later years living that engages the whole neighbourhood

Project: Homes for Later Living
Client: Central Bedfordshire Council

By ensuring homes for older people and those needing care are set in the heart of the community, people can make a positive decision on how they want to live. An active landscape with community spaces at its heart creates a vibrant place that encourages social interaction and intergenerational connections. Our feasibility study reinvents the traditional care home providing a social community environment around a central plaza. With excellent daylight levels, plentiful views to natural surroundings, and outdoor spaces at every level, residents of the care home and independent living facility are fully connected with nature.



Imagine a school designed to maximise outcomes for children, staff and community

Project: Beormund School
Client: Southwark Council

Beormund School in Peckham is a new build primary school for 56 pupils with Social, Emotional and Mental Health (SEMH) needs. Pupils with SEMH often have a disassociation to education and might have been excluded from mainstream settings. Beormund School is designed to be a place to which they can form a positive emotional connection and where they can enjoy learning. Built of modular timber cassettes and a glulam frame, Beormund School is a net zero carbon scheme, both in terms of energy use and embodied carbon. Timber is used as both structure and finish to give the school a robust, but non-institutional feel, which we hope will also improve educational outcomes.



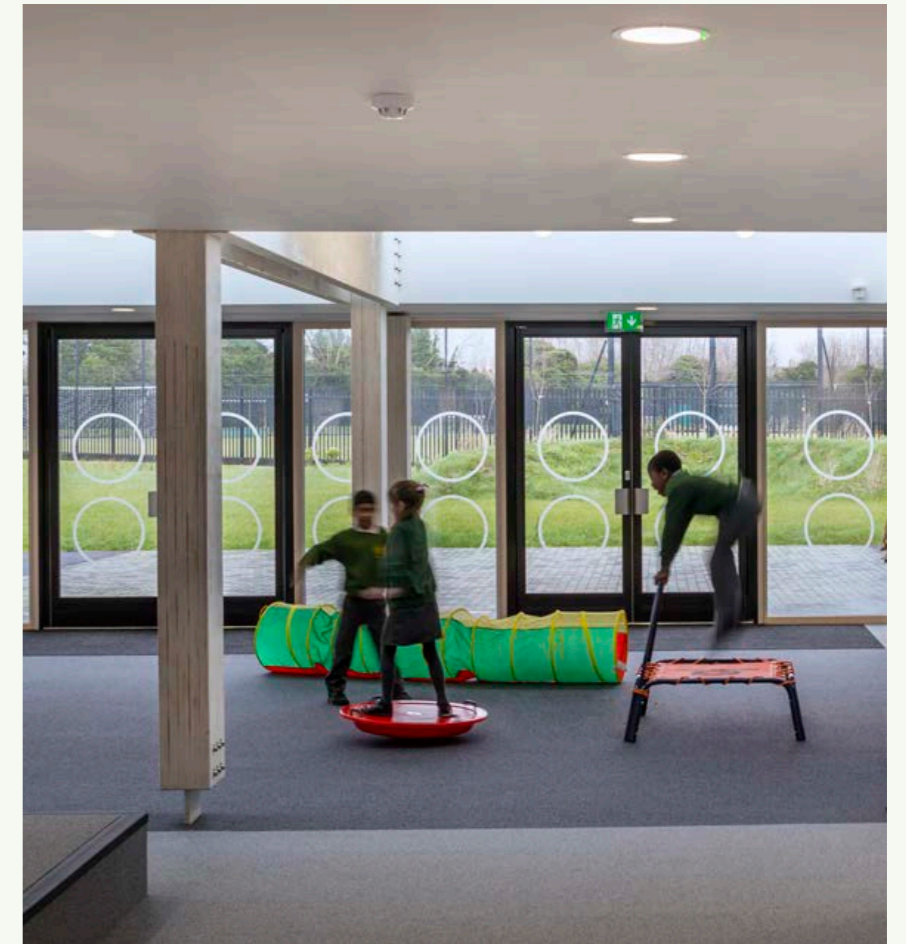
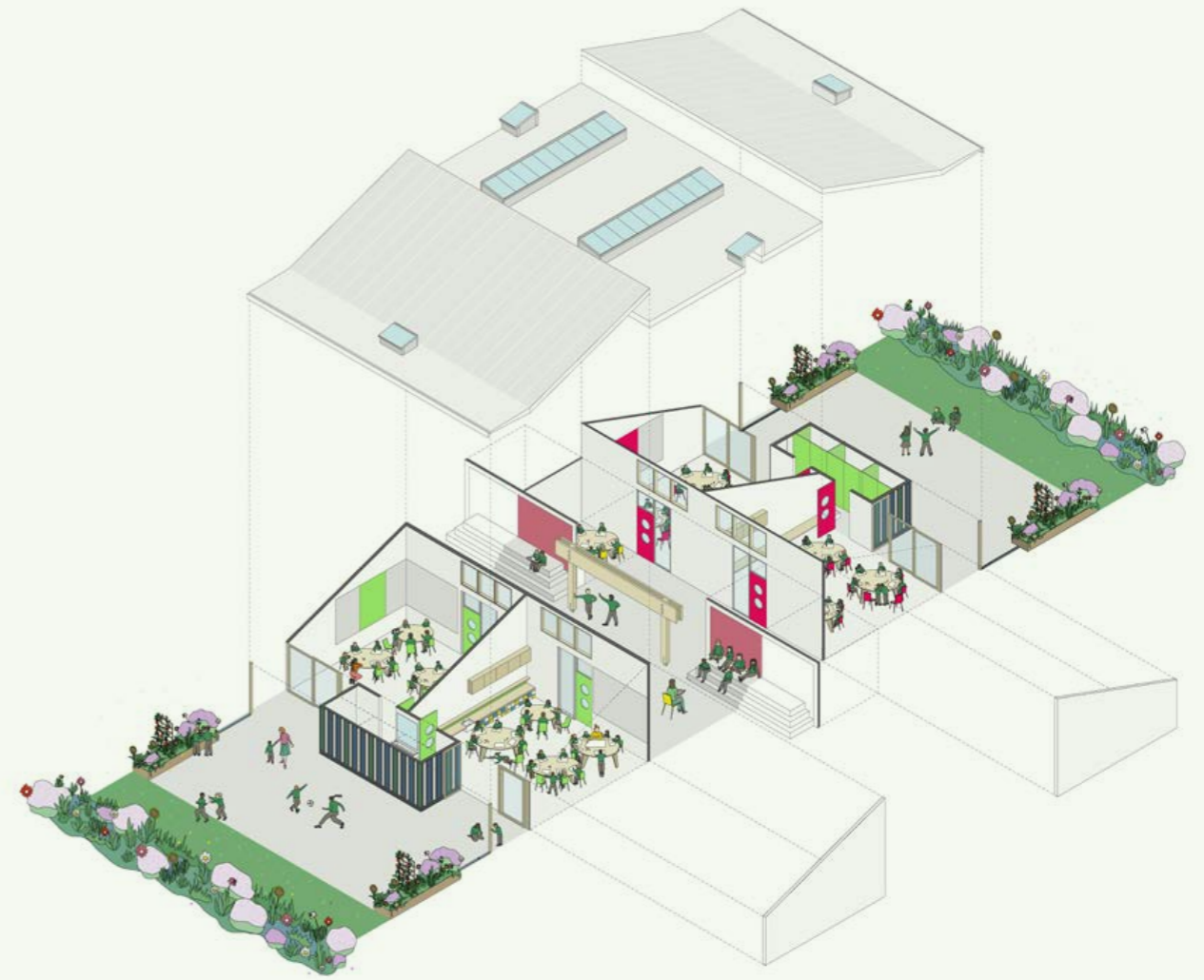
EDUCATION



Imagine if we could bring the power of nature into every classroom

Project: Holy Cross Primary School
Client: Diocese of Clifton

We used cutting-edge off-site prefabrication methods to deliver this energy-efficient and speedily constructed new school. Working with a timber-frame manufacturer we developed a kit of structural timber cassettes and laminated timber columns and beams that can be adapted to suit both the particular requirements of a site and the educational aspirations of the building's users. Two profiled wings of classrooms are connected by a lower central spine containing group rooms and specialist learning areas. All classrooms to have direct access to covered external learning spaces with views over the playing fields.



Imagine how the climate strike generation could help to green schools

Project: Rosendale Primary School, London Borough of Lambeth
Client: Rosendale Primary School

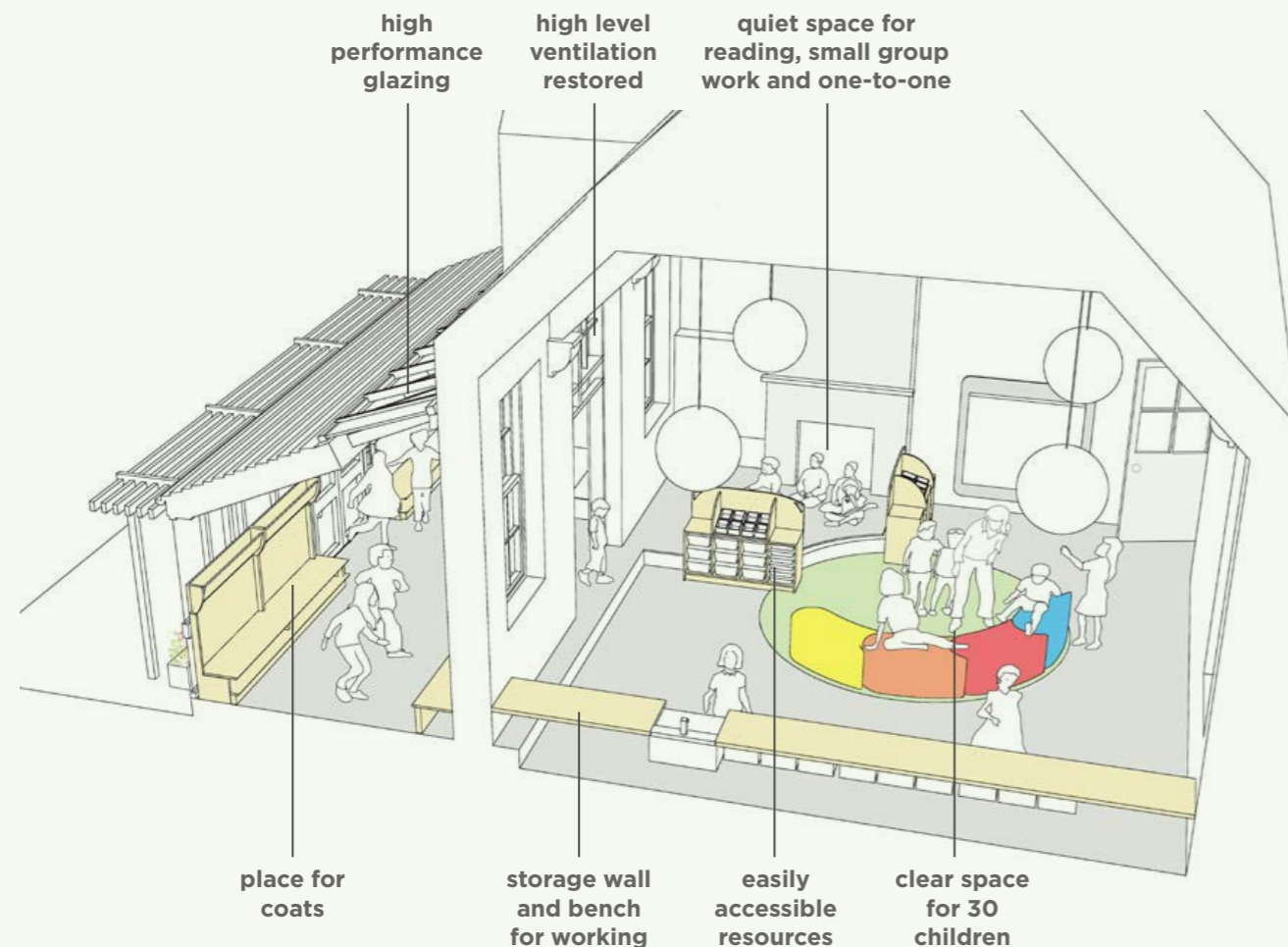
Our initial commission for Rosendale was to refurbish classrooms on a shoe-string over the summer holidays. Through our consultation process we asked more probing questions about the pressures this oversubscribed south London school was facing in a challenging funding environment. So, in parallel to the initial refurbishment, we helped the school to devise a future plan to improve the school organisation, building fabric, outdoor space and energy systems; the plan continues to enable smart decision-making and support funding applications.



Imagine how breaking with tradition could inspire the next generation

Project: Shenley Academy and Sixth Form Centre, Birmingham
Client: Shenley Academy

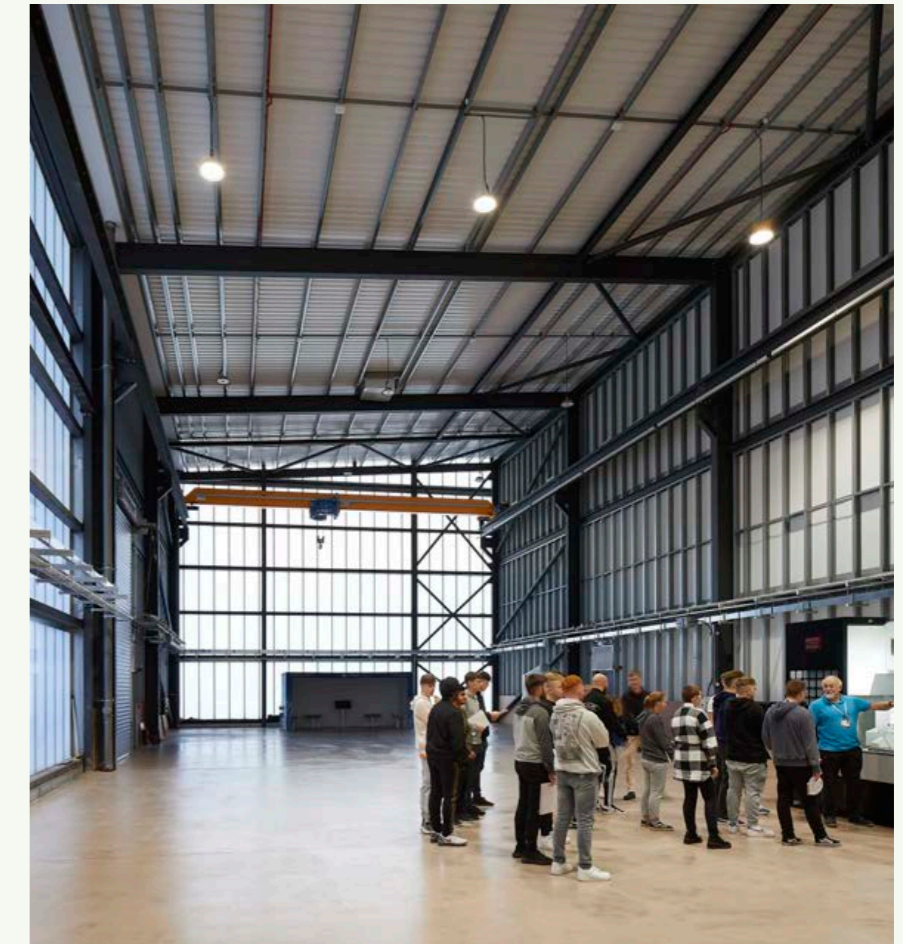
This new-build Academy for 1,150 eleven to eighteen year olds is organised around six learning centres which are designed to be as flexible and adaptable as possible. At the heart of each cluster is a social learning zone, which is open to general circulation. Here the classrooms have glazed walls that give a sense of openness and enrich the experience of walking through the building. Theatre and dance spaces are conveniently located in the central wing, adjacent the main entrance, to ease access for members of the local community. On the south facade the hill is dug away to form a theatre court with terraced seating.



Imagine how next generation learning will transform our economy

Project: Black Country & Marches Institute of Technology (IoT), Dudley
Client: Dudley College of Technology

The IoT aims to transform the economy of the Black Country through an industry-led collaboration between employers and further education. The project was unique for its innovative design and construction process, with Dudley College pioneering the Integrated Project Insurance (IPI) alliance model. IPI supports innovation by promoting a culture of mutual trust, no blame/no claim and the freedom for decisions to be made on a best for project basis. Our first sketches were guided by the intelligence of the whole team, avoiding waste and dead ends in the design process. The IoT welcomed its first cohort of students in 2021.



Imagine a building that inspires students' studies



Project: Olisa Library
Client: Fitzwilliam College, Cambridge

The new library and IT centre at Fitzwilliam College creates a place for study that enjoys the peaceful landscape and respects the adjacent listed architecture.

A spiralling stairtower, with desks at landing levels, takes readers between library floors and culminates in the 'nest' level where readers enjoy even wider views across the Campus.

"Users of the building are delighted with it, students having their favourite places and finding their studies inspired by them."



Imagine if buildings could remain fit-for-purpose indefinitely



Phase 2a refurbished the large concrete and glass lantern - the iconic centre-piece 'floating' above the Great Hall - and improved the external fabric to the hall's large single glazed space, introducing a new ventilation system to greatly enhance internal comfort.

Project: Fitzwilliam College Masterplan & Modernisation
Client: Fitzwilliam College, Cambridge

Designed and built in 1963 the Central Building's functions had become outdated and needed a holistic solution to make them effective and comfortable spaces, extending their usefulness into the future. Following the relocation of some of the building's original functions to newly constructed parts of the College, including our Olisa Library, we reviewed the spatial opportunities and functionality of the building. Our phased refurbishment is improving the building fabric and environmental performance, and is rationalising the use of spaces to increase opportunities for dining, conference and social areas.



Imagine a place for developing ideas that will shape our future



Project: Academic Square
Client: WMG, University of Warwick

WMG is an international role model for successful collaboration between academia and the public and private sectors. Over two decades we have worked with them on a series of buildings that create a new sector of the campus; the International Manufacturing Centre, the International Digital Laboratory, the International Institute for Product and Service Innovation and the International Institute for Nanocomposite Manufacturing. The highly adaptable and flexible facilities are designed with good acoustic separation, visual connections, spaces for social interaction, maximised natural light and layout flexibility.

Imagine a new university campus seamlessly integrated into a mature park



Project: City Campus, Singapore
Client: Singapore Management University (SMU)

This new campus for 6,000 students is located in the heart of the historic and cultural centre of Singapore and designed to keep a sense of open space and visual connection between the historic buildings that surround it. Three tiers of landscape - concourse garden courts, open ground floors and fifth floor roof gardens - act as both a lung to individual buildings and collectively as a signature of a 'Campus in the park'. Four schools and a library are linked by an underground concourse, which has views into open courtyards that connect the concourse to the street, park and campus facilities.



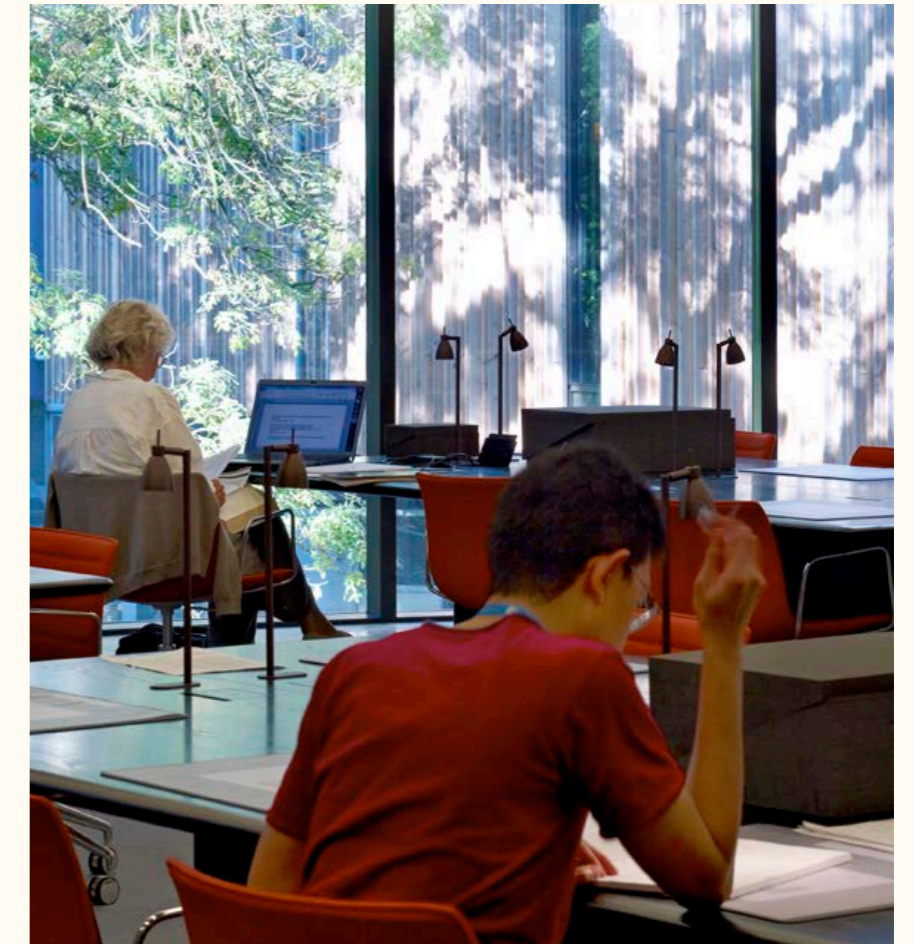
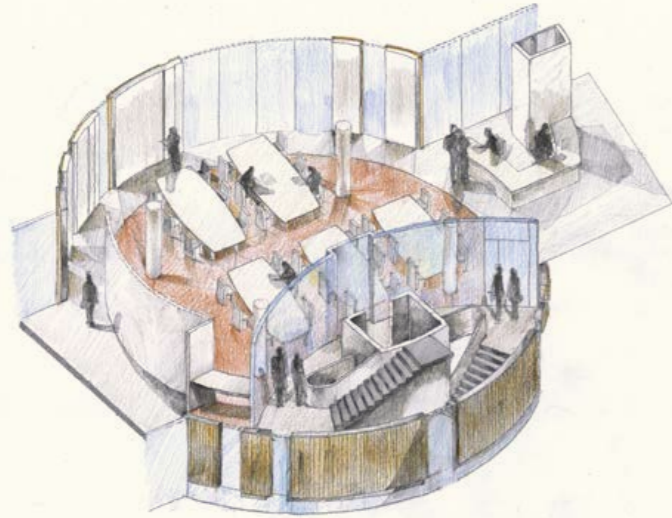
CULTURE



Imagine a workplace for scientists surrounding a botanical archive

Project: New Herbarium, Library, Art and Archives Wing
Client: Royal Botanic Gardens Kew

The new Herbarium wing provides excellent conditions for Kew's priceless collection of dried plant specimens and rare botanical books and illustrations, whilst securing the Royal Botanic Gardens' status as the world leader for the study of plant diversity and conservation. A condition for funding for the new Herbarium - as part of a World Heritage Site - was to open the collections up to a wider audience. There are now large rooms for research and collaboration, a reading room open to the public by appointment, and a new entrance with a generous reception area and facilities for school groups and visiting researchers.



Imagine giving future generations a window into their cultural history

Project: BFI Master Film Store, Warwickshire
Client: British Film Institute (BFI)

The BFI National Archives is the most significant collection of the moving image in the world. We designed a highly efficient, sub-zero temperature archive to provide ideal conditions for preserving master copies of extremely fragile and unstable nitrate and acetate film. The building performs its function in an elegantly composed structure, with pre-cast concrete fire shrouds articulating its long elevations. The building was realised through intense research, consultation and collaboration with the BFI archive team, international film experts and engineers; setting a new international standard for the storage of film.



Imagine the impact of planting 30 million trees in your neighbourhood

Project: Conkers Aerial Walkway, Leicestershire
Client: National Forest Charitable Trust

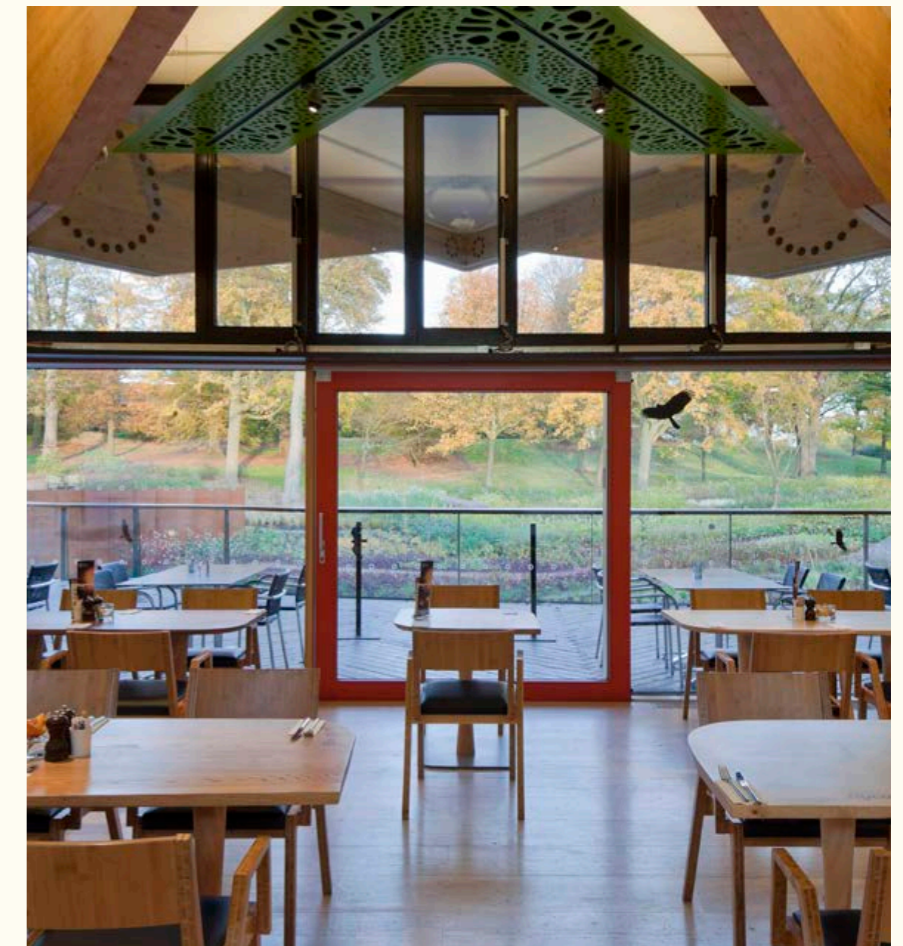
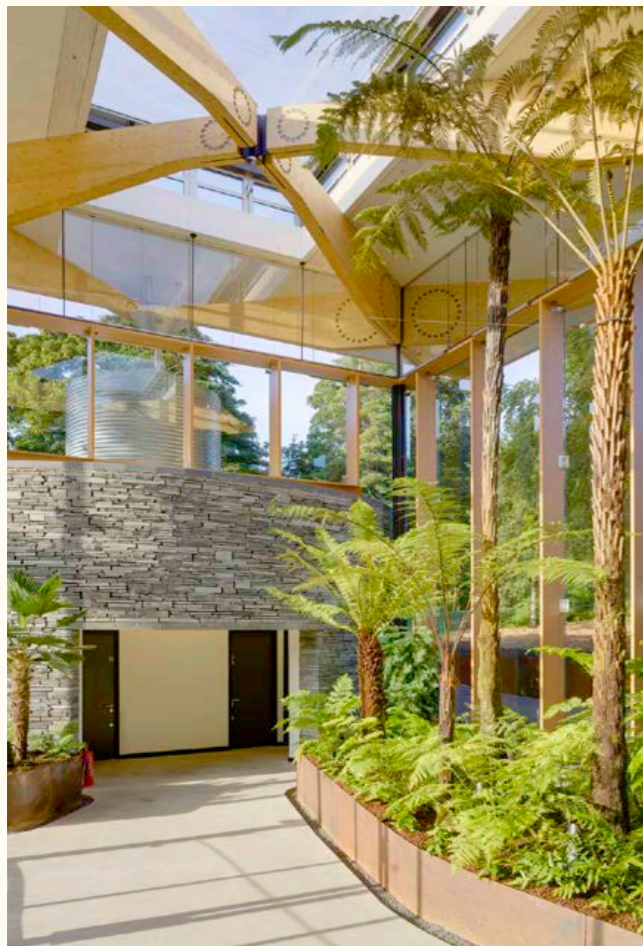
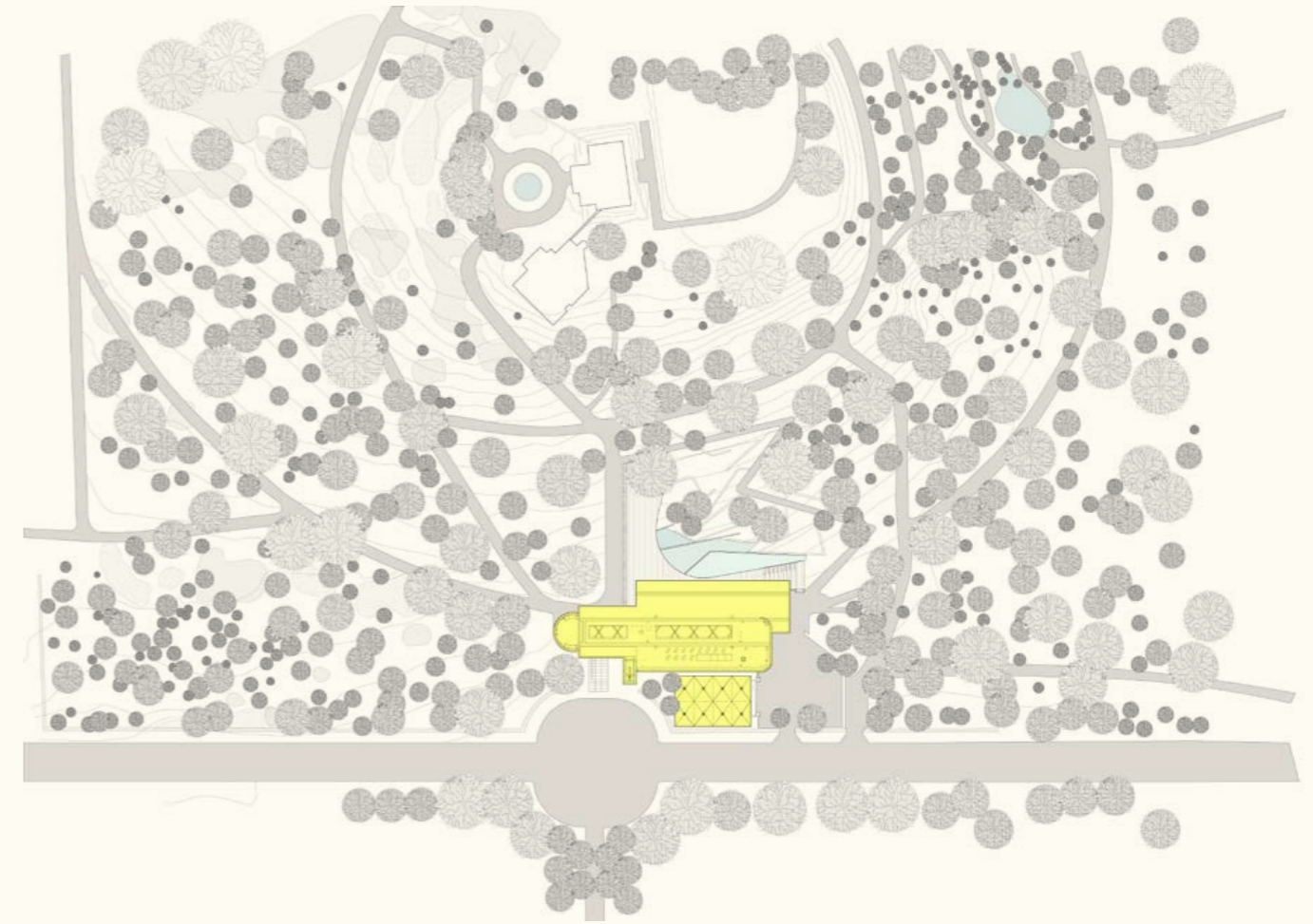
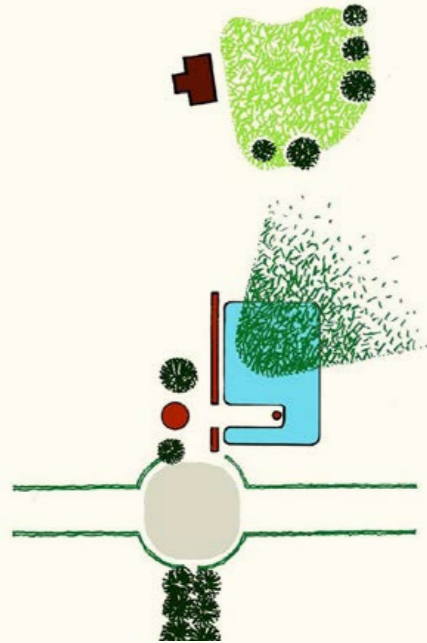
The National Forest is an inspiring story of how nature can return to a post-industrial landscape. We worked with the Trust on a masterplan and visitor strategy to connect people with the evolving forest. The masterplan contains many features including a 400m aerial walkway through the trees; the longest treetop walkway in the UK. Accessible to all, an important aspiration for the walkway is to support school children visiting the forest. At several points along the route, treehouses or 'eyries' have been designed to function as covered viewing platforms as well as event and educational spaces.



Imagine a gateway building that creates outsides inside

Project: John Hope Gateway, Edinburgh
Client: Royal Botanic Garden Edinburgh (RBGE)

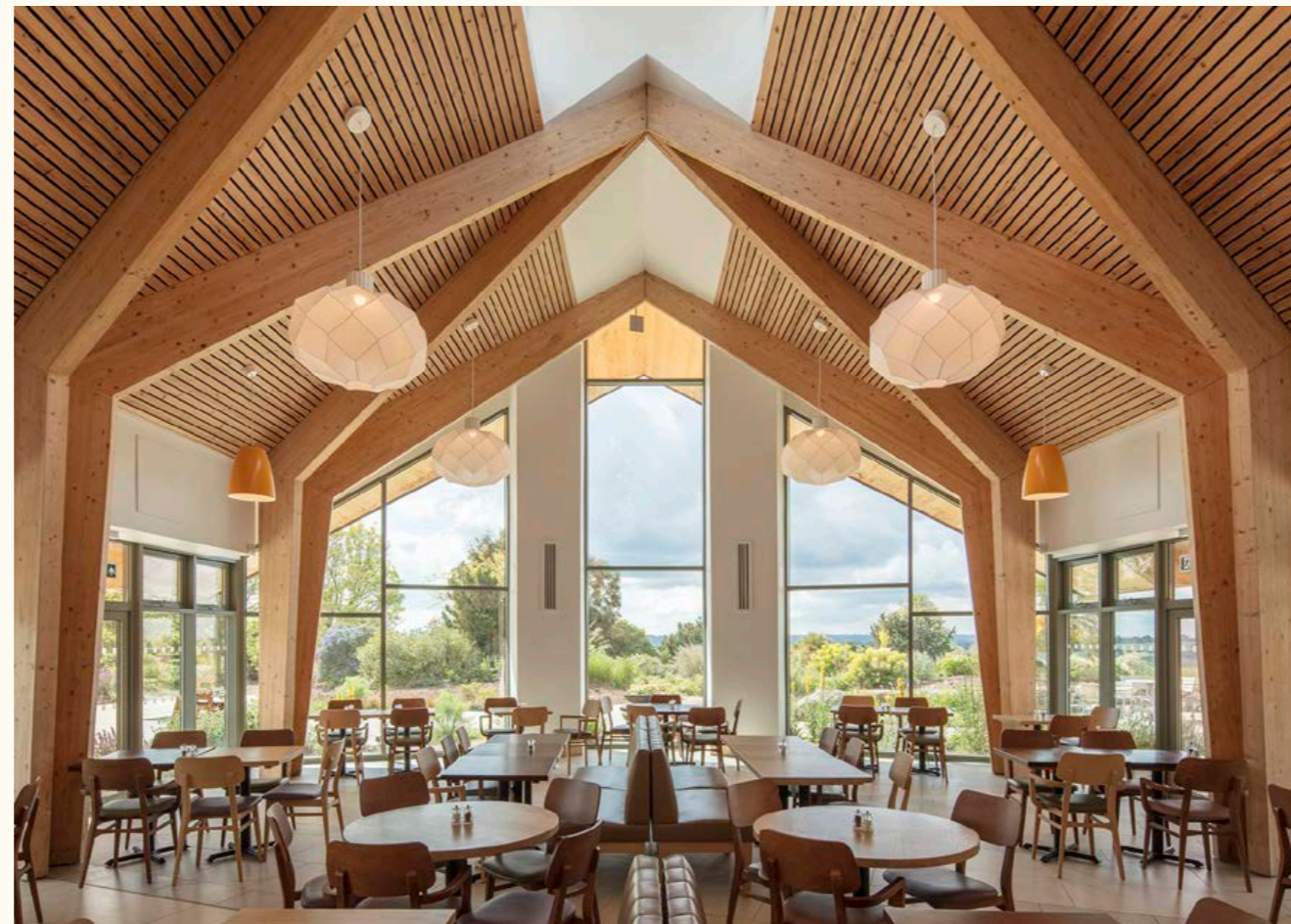
This low-energy, low-carbon visitor centre is a threshold into the hidden world of the RBGE, with exhibitions, a media studio, shops, a restaurant and a new bio-diversity garden. Most visitors arrive through the glass-house porch, their first view focused on the Garden beyond before they turn and rise gently in to the main hall. A porous ground floor allows visitors to enter and leave the building from many other points and flow freely between different areas. Sailing above all is the timber roof, extending to create sheltered indoor and outdoor spaces and framing views of the arboretum.



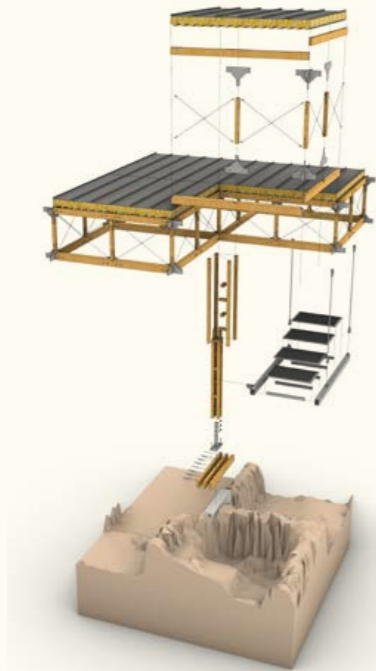
**Imagine a place that
could inspire a nation
to garden**

Project: RHS Garden Hyde Hall Hilltop,
Essex
Client: Royal Horticultural Society

The new Hilltop buildings comprise the Clore Learning Centre, funded by Clore Duffield Foundation, and the Hilltop Lodge, home to a new award-winning field to fork restaurant and activity barn. The Learning Centre completes the RHS's nationwide purpose-built education spaces, equipping Hyde Hall with the facilities to drive forward the RHS Campaign for School Gardening; inspiring schools to provide children with gardening opportunities to improve physical and mental well-being. We worked with award-winning landscape designer, Adam Frost, on the wider masterplan and the new gardens surrounding the Hilltop Buildings.



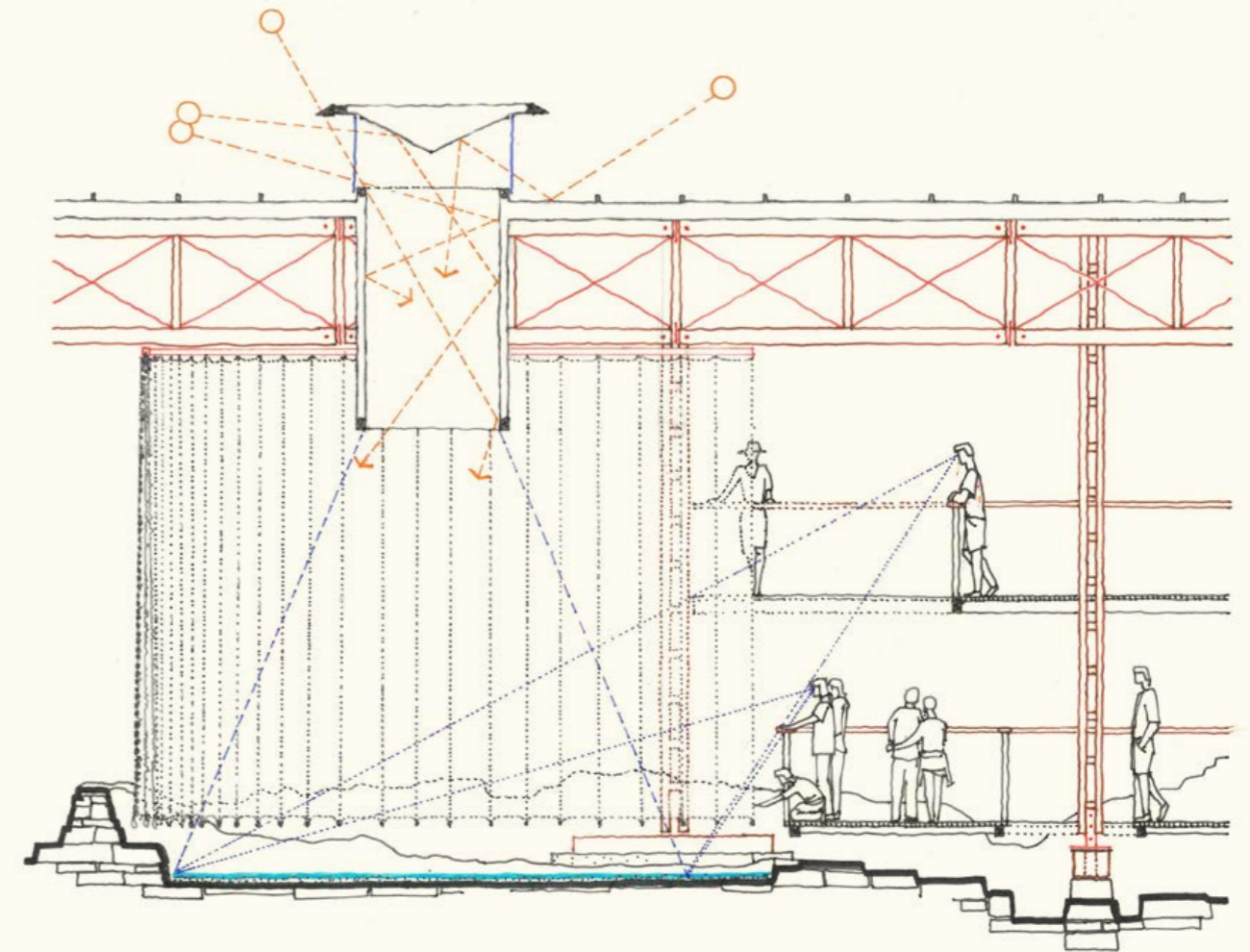
**Imagine a place
that protects the
ancient while
celebrating the new**



A tectonic approach to protection

Project: Nea Paphos
Mosaics Shelter, Cyprus
Client: Getty Conservation Institute

Having been left undisturbed below ground for two millennia, precious tesserae now find themselves under direct attack from UV and direct sunlight, the rain above and groundwater below, from salts carried by strong onshore winds, and from visitors attracted by their beauty and fame. Considering the twin challenges of creating a shelter for the mosaics (technical, following the science), and enhancing the visitor experience (visual, dynamic, story-telling), our solution allows the mosaics to be exposed, understood and enjoyed by both public and conservators alike.



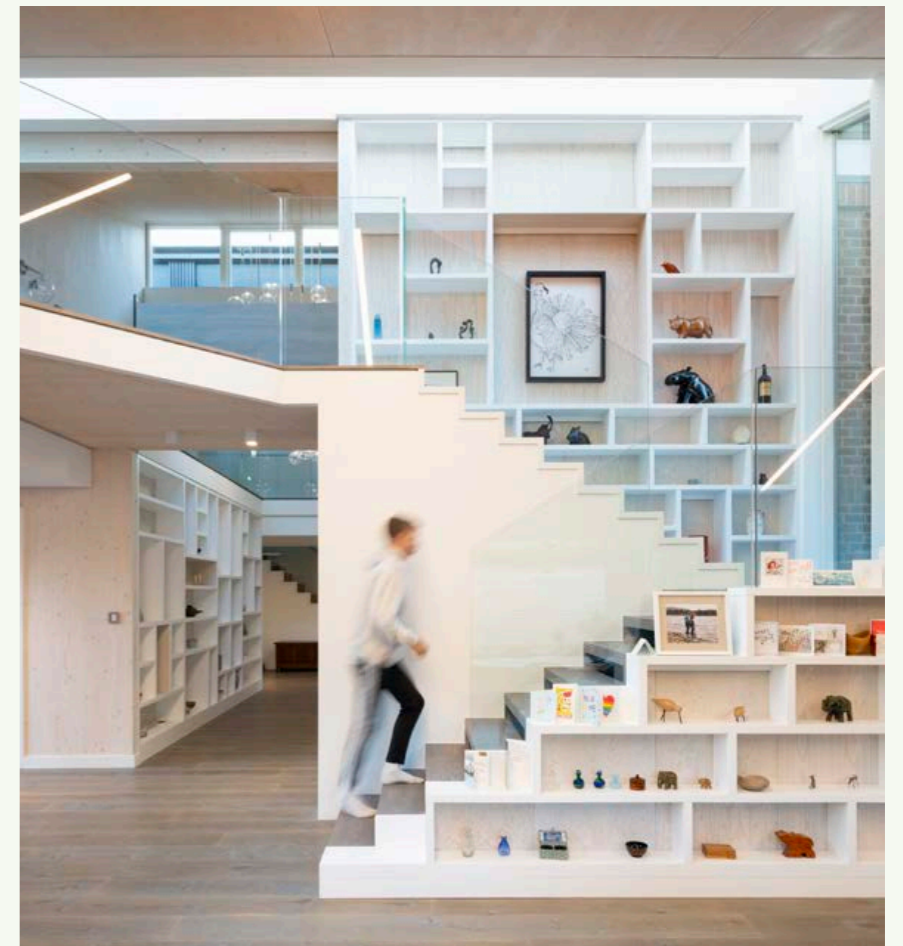
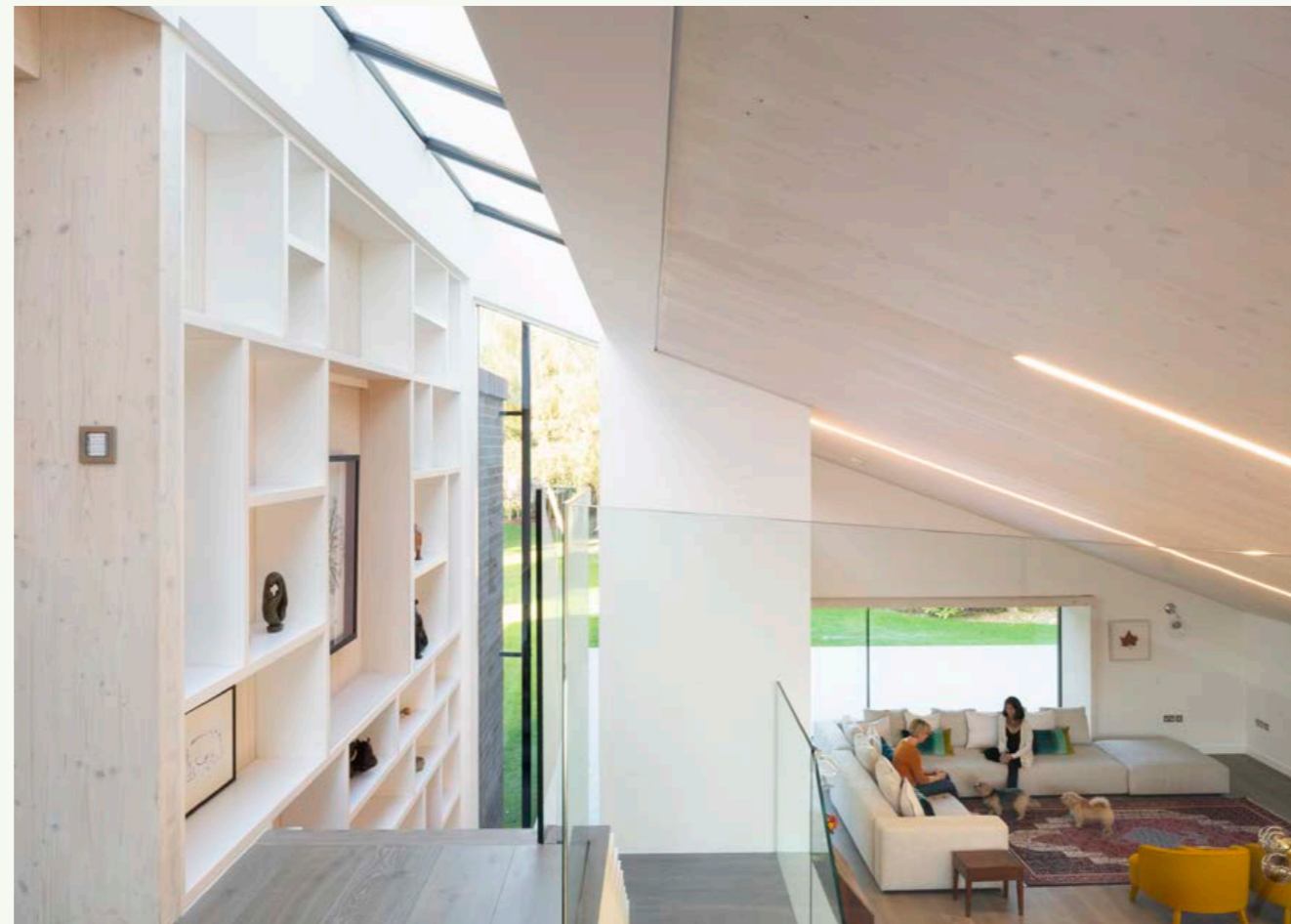
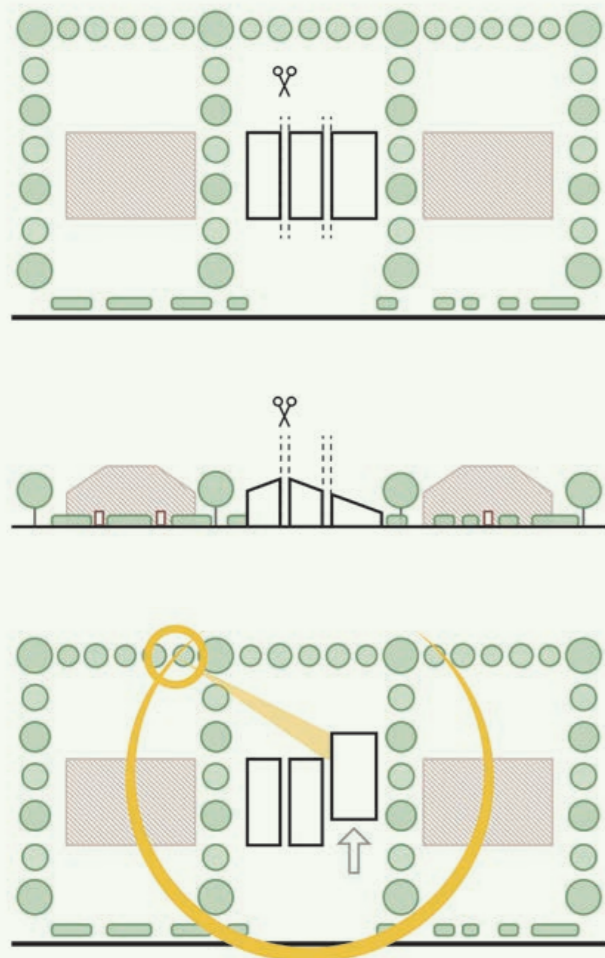
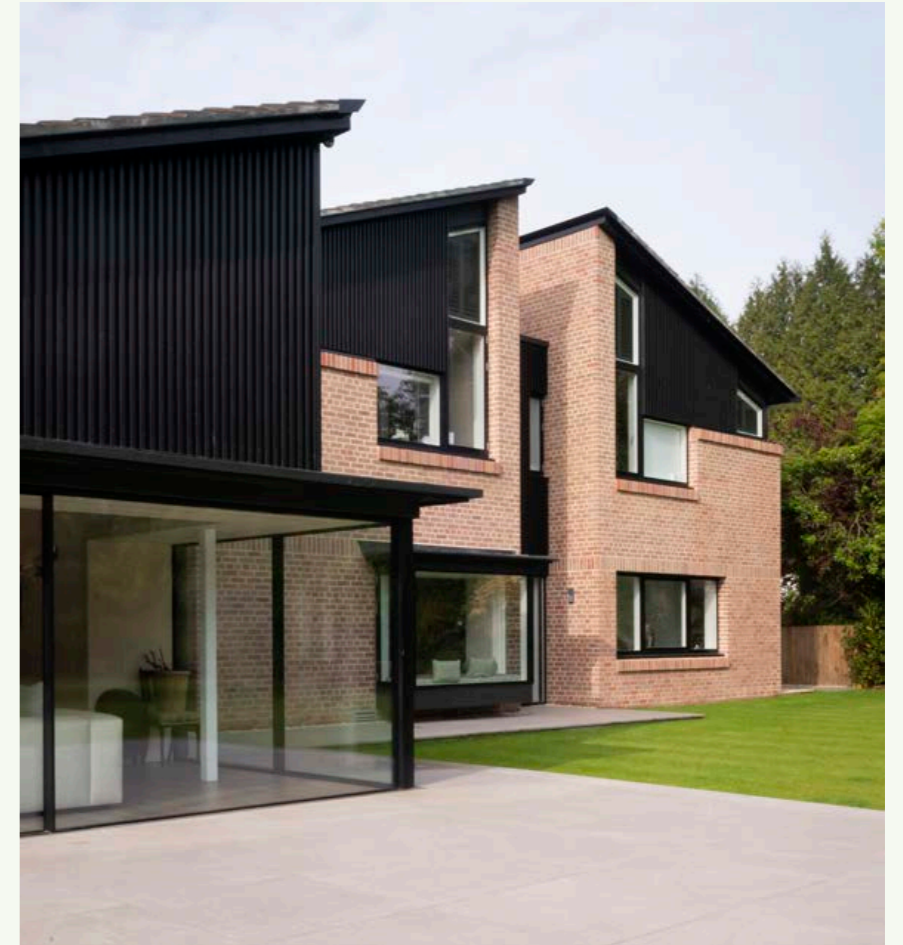
RESIDENTIAL



Imagine how nature at home could inspire and transform our lives

Project: Push-Pull House, Middlesex
Client: Private

Our client's existing house was dark and gloomy, blocking views and access to a wonderful garden. The new house is pushed and pulled into three parts. Overlapping voids and double-height walls form playful volumes so the living spaces flow together, making for a fun and sociable home. Free corners frame views out to the garden and daylight from high clerestories in the split gable design cuts deep into the central hallway - glimpses of changing weather and sky follow the family as they go about their day. Everywhere are the warm textures of the exposed timber structure that is inherently low-carbon and low-toxic; healthy for the occupants and for the planet.



Imagine a city centre apartment offering healthy green views

Project: Baldwin Terrace Apartments, London Borough of Islington
Client: Jerram Developments

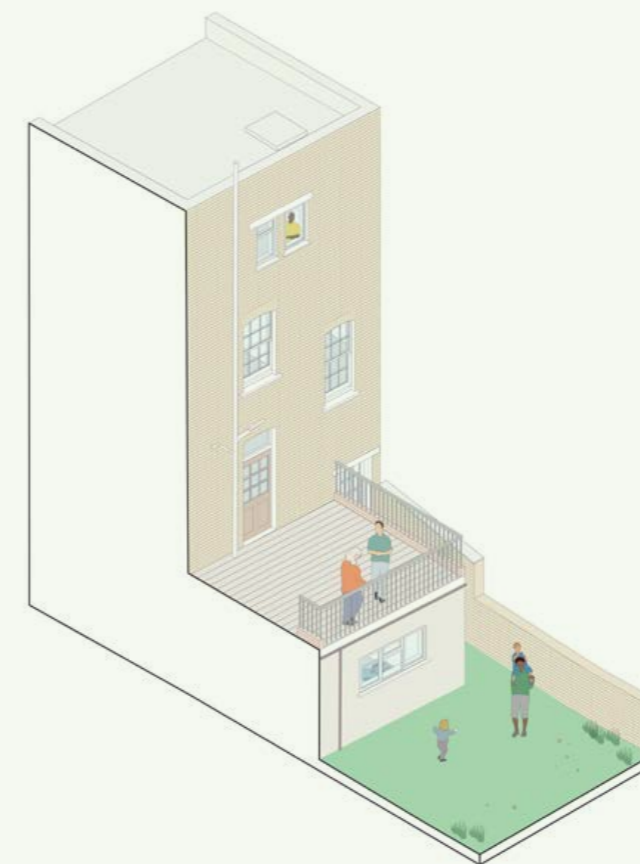
This five-storey apartment building optimises its narrow south-facing site to provide dual aspect accommodation with clear views of the adjacent canal basin. Four duplex units each have their own front door with living spaces at street level and bedrooms at canal level below. Above the duplex apartments, eight units are paired on each floor, with the two penthouse apartments enjoying south-facing corner terraces. A layered south facade of sliding windows and louvres allows residents to passively control the internal environment whilst enjoying natural light and ventilation.



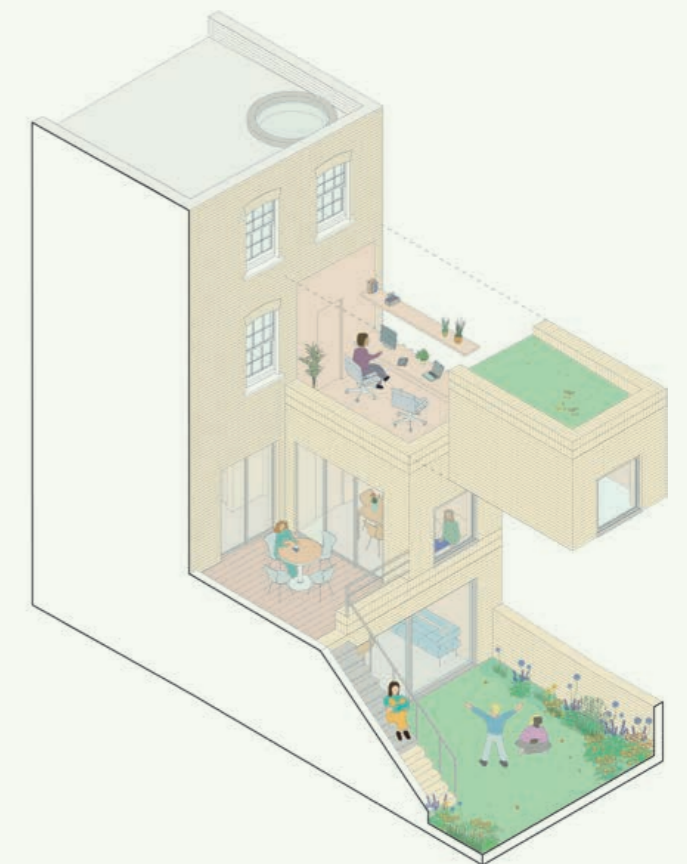
Imagine all the family working from home, harmoniously

Project: Live/Work House, London Borough of Islington
Client: Private

Our client challenged us to remodel their Victorian house, located in an Islington Conservation Area, to accommodate new home-working spaces for the whole family, enlarged bedrooms, and a dramatic timber staircase tying all the spaces together. Wood has been used extensively in the construction and finishes of the house to reduce the embodied carbon of the project. Access to the garden has been improved to allow a fluid relationship between inside and out. An open plan kitchen and dining space opens to an external terrace overlooking the garden, further establishing a connection with nature.



As existing



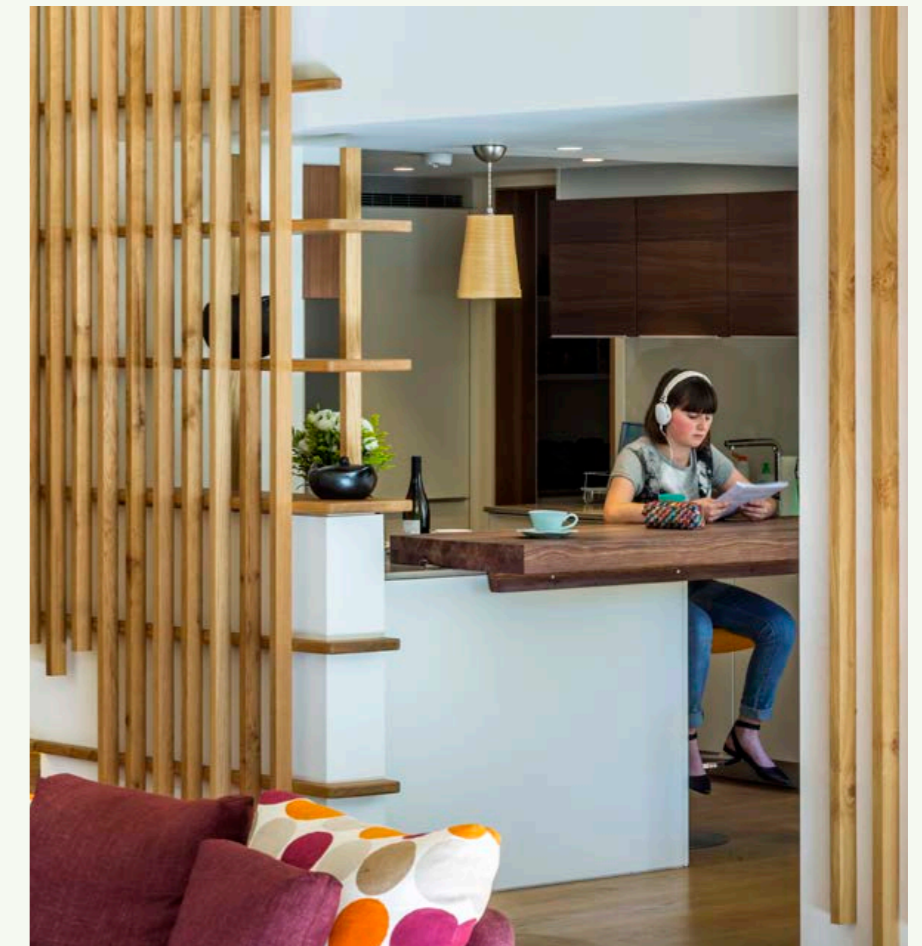
As proposed

Imagine a home that fosters family togetherness



Project: House in Hampstead, London
Client: Private

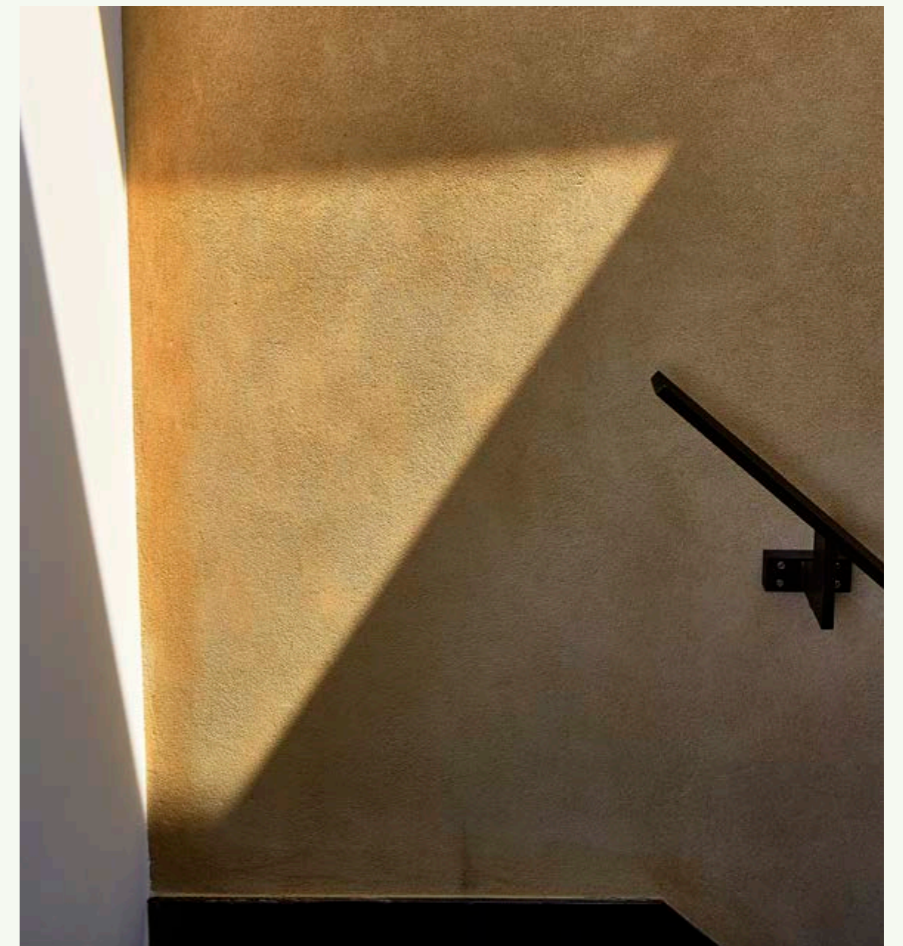
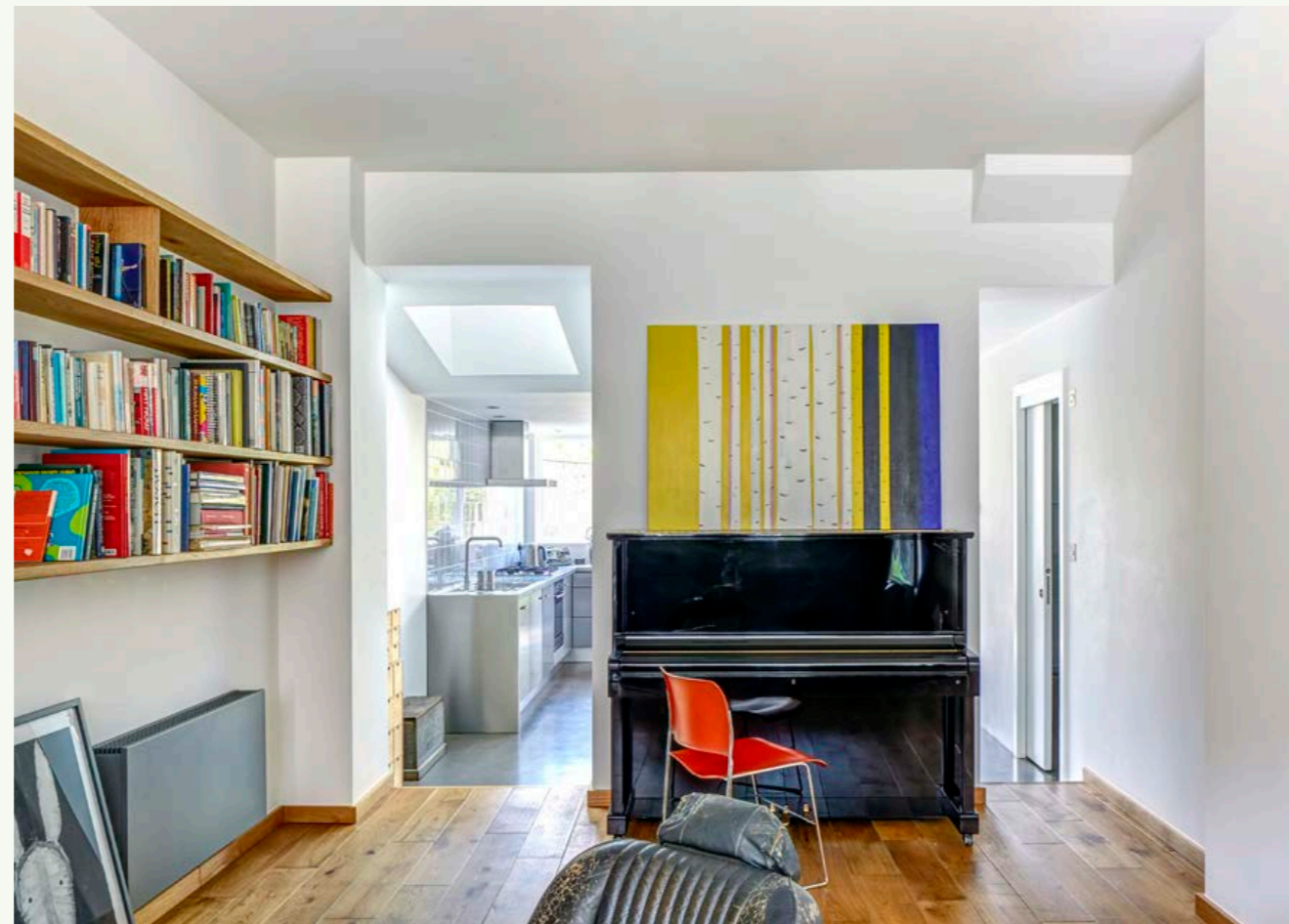
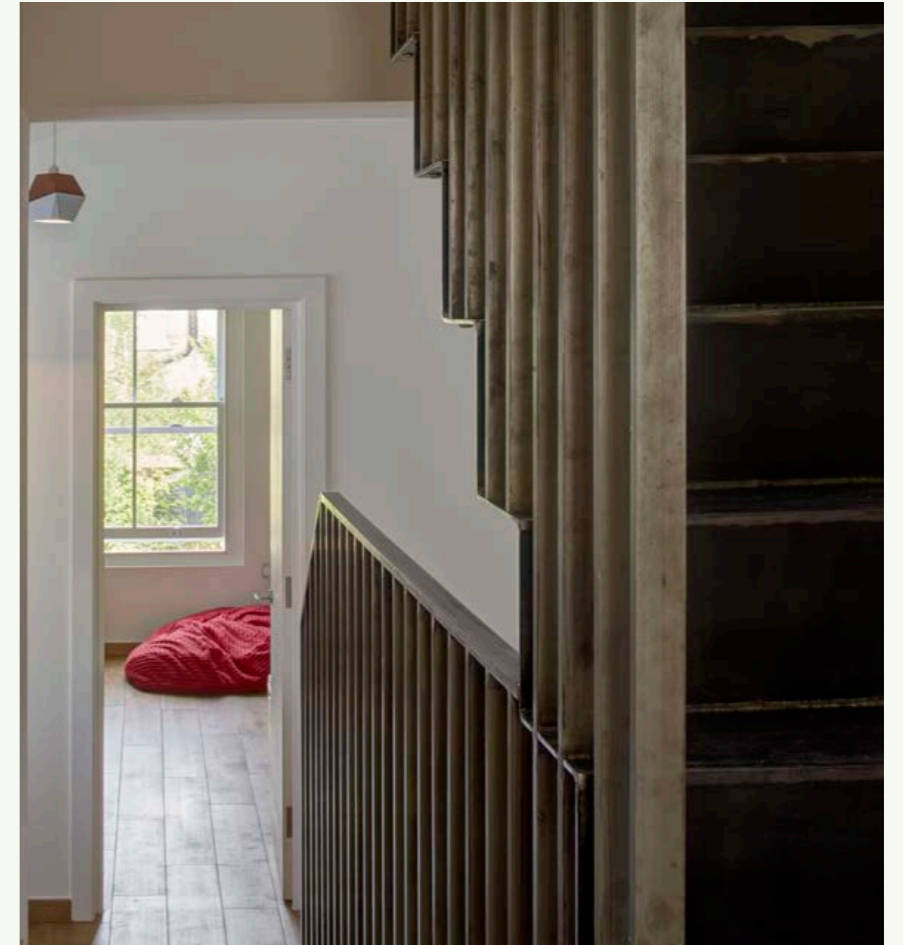
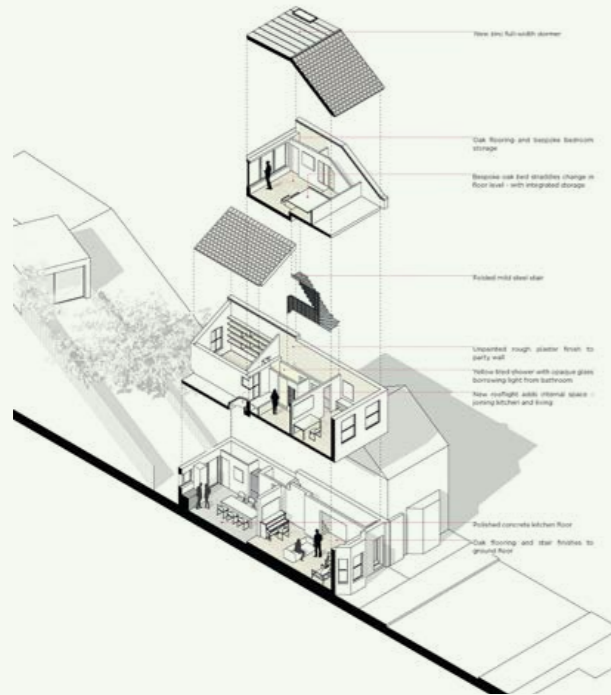
Our client came to us for our design flair to remodel their Georgian home. The poor spatial layout was undermining how the family wanted to be together. How could we make places for working parents and busy teenagers to do their own thing without being shut off in upstairs rooms? Using the pure geometry of a cube, we created a new large central living space, off which open smaller rooms to match the rhythms of family life: there's a warm and welcoming place to come together in but also spaces to quietly retreat to. The design maximises natural daylight, ventilation, materials and a connection to nature.



Imagine a Victorian house transformed into a 21st century home

Project: Artist's House, Brixton, London
Client: Private

This Victorian terraced house has been reconfigured to meet the needs of an artist and her growing family. Subdivided, small, dark rooms lacked gathering space for family and friends, and the house was cold and damp in winter. The family now has a bright and spacious living room that flows through to the kitchen, offering dual aspect views to the outside. Upstairs, a study nook enables home working for the first time and a new loft bedroom has bespoke oak storage and a built-in bed making creative use of a change in floor level. Walls have been lined with calcium silicate natural insulation, resulting in a healthier, better quality space for family togetherness.



Workplace Sector Lead:

Carol Costello
carol.costello@cullinanstudio.com
020 3307 4016

Higher Education Sector Lead:

Lara Michael
lara.michael@cullinanstudio.com
020 3307 4024

Education Sector Lead:

Alex Abbey
alex.abbey@cullinanstudio.com
020 3307 4011

Health & Wellbeing Sector Lead:

Lucy Brittain
lucy.brittain@cullinanstudio.com
020 3307 4027

Homes and Communities Sector Lead:

Kevin Goh
kevin.goh@cullinanstudio.com
020 3307 4022

Energy Sector Lead:

Kristina Roszynski
kristina.roszynski@cullinanstudio.com
020 3307 4023

Frameworks we are on:

Clarion Housing Group (DPS)
Crown Commercial Services Construction
Professional Services (DPS)
EN:Procure Green Consultants (DPS)
Everything FM
Homes England DARTS
Kingston University
LHC ADS
London Construction Programme
National Framework Partnership
NHS London Procurement Partnership (DPS)
Perfect Circle / SCAPE (DPS)
Procurement Assist (DPS)
Procure Public
University of Cambridge
University of Nottingham
Waltham Forest (DPS)
Watford Community Housing - Herts, Beds
and Bucks Development Framework

Clients we collaborate with:

Alder Hey Children's Hospital
Bankside Open Spaces Trust
Barking Riverside
British Film Institute
Broadway Living
Camden Council
Dudley College of Technology
Fitzwilliam College Cambridge
Getty Conservation Institute
Global Witness
InnovateUK
Islington Council
Jaguar Land Rover
Kingston University
Lambeth Council
Maggie's
Merton Council
Milton Keynes College
National Forest Charitable Trust
Queen Mary University of London
Royal Botanic Gardens, Kew
Royal Botanic Gardens, Edinburgh
Royal Horticultural Society
Sixty Bricks
Southwark Council
TATA Motors
University of Cambridge
University of Nottingham
University of Warwick
Waltham Forest Council
Woburn Estates
Wolverhampton University
WMG

Selected Recent Awards:

BD Sustainability Architect of the Year
BD Public Building Architect of the Year
RIBA National Awards
RIBA Regional Building of the Year
RIBA J MacEwen Award Commendation
BCO National Award
Building Awards Project of the Year
AIA UK Excellence in Design Awards
New London Awards Community Prize
New London Awards Environmental Prize
Civic Trust Awards
London Healthy Workplace Award
RICS Awards
National Housing Award
Sunday Times British Homes Awards
Building Awards Architectural Practice
of the Year
Building Awards BIM Initiative of the Year
Building Better Healthcare Awards
AJ Retrofit Award
AJ Specification Award
BCI Award - Highly Commended
Building for Life Awards
Wood Awards
Brick Awards
The Pineapples Future Place Award
RIBA Royal Gold Medal - Edward Cullinan

