

# Garrett House

**Location:** London, UK

**Client:** Private

**Completed:** 1966

**Size:** 110 sqm

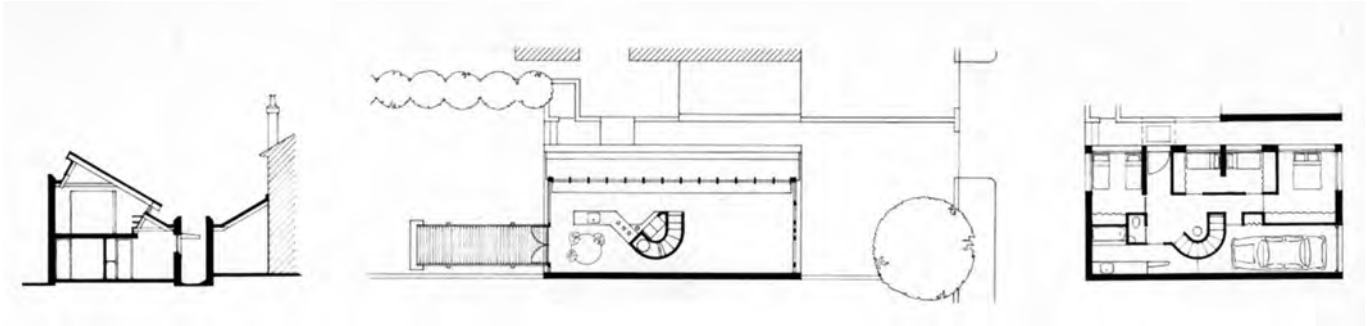
An urban development of **Ted Cullinan's early experiments** in composing combinations of very closed and very open spaces.

Garrett House, located on the edge of south London, is similar in plan and section to Ted Cullinan's house in Camden Mews.

The house is compact, compartmented, soundproof and of heavy construction for bedrooms on the ground floor, and open, lightweight and barely divided for shared living areas on the first floor; a gallery.

Garrett House's contribution to its setting derives from Bartholomew Villas, though in this case, the setting is suburban rather than urban. A garage with a sloping roof is added to the last of a seemingly endless row of early 20th century villas. The roof forms the north slope of a valley whose south slope is the roof of the house itself, completing the endless row of villas with a high vertical wall.





Garrett House