

Horder House

Location: Hampshire, UK

Client: Private

Completed: 1960

Area: 55 sqm

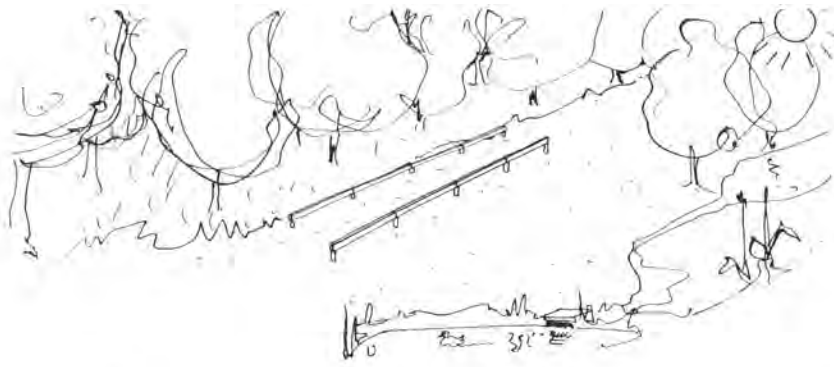
Horder House is **a reaction to a specific site and climate**. Concerned with the method of its realisation, it uses simple but expressive details.

Horder House was designed and built by Ted Cullinan for his uncle, Mervyn Horder. The house is long, thin and south-facing in a crease in the landscape of Hampshire where a steep wooded bank joins a flattish, grassy valley floor.

It is a single space, serviced by a small kitchen. It has a bedroom and a shower at either end, in which the beds are on the enlarged window cills, cantilevered over the wild garden. So, by sliding open the windows you can 'sleep out'.

Today the Horder House might be called a passive solar house, gaining from its southern aspect and protected by bamboo screens from the over-powering summer sun.

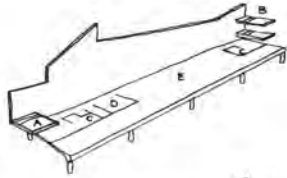




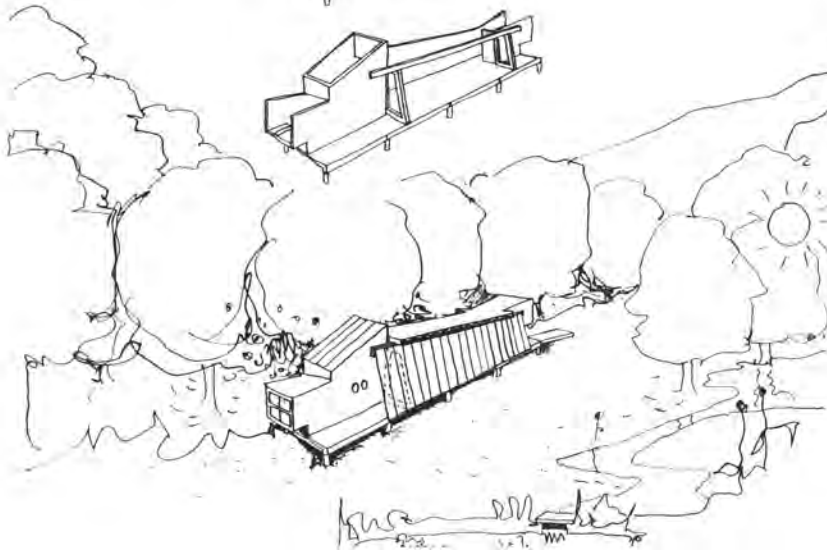
a tree covered bank, facing South,
a patch of grass and a stream,

sink ten posts into the ground and
place two precast beams on top of them.

- A = double bed.
- B = two bunk beds.
- C = showers.
- D = kitchen.
- E = studio/living room.



form a precast platform between the beams
and build a long wall down the North side.



erect two strong doorframes with a beam
to join them, and two short walls on the
South side.

bolt on the windows and fix on the roof.

Horder House — 1959

