

Leighton Crescent

Location: London Borough of Camden, UK

Client: Camden Council

Completed: 1977

No. of Homes: 16

Our scheme, comprising four town houses and twelve apartments, **provides the missing centrepiece** of Leighton Crescent.

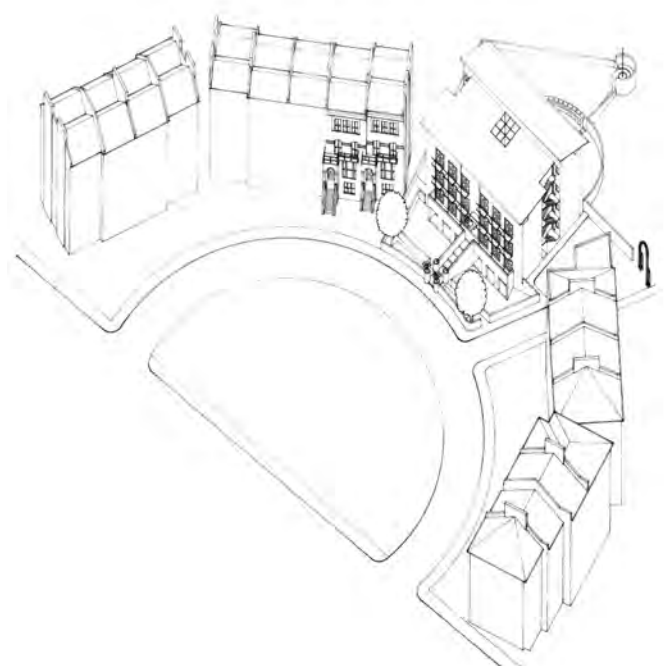
A central ramp rises from the pavement to the first floor front doors of the four wide frontage houses that occupy the lowest two floors on a quadripartite plan.

Each house overlooks its own hedged-in private garden. Beyond the first floor front doors, the route leads on out through the building to a circular barbeque that terminates the axis of the Crescent in plan.

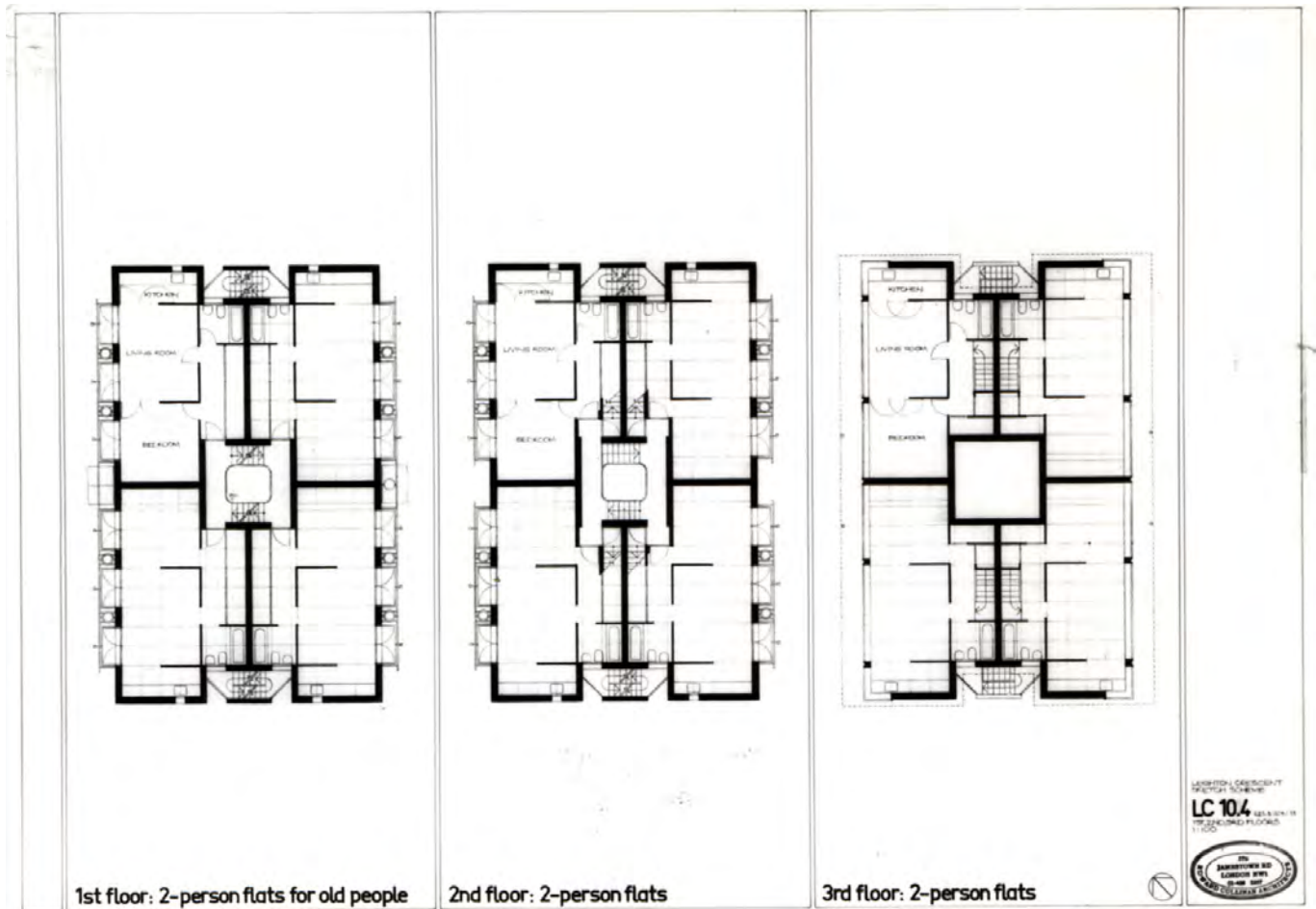
The wide frontages allow the houses and apartments to have gallery plans that the residents can change at will by moving one or two identical partitions between the main rooms. They also allow each to have three large, evenly spaced French windows; a system that introduces a large scale to the elevation that then measures up to the surrounding buildings.

The cornice is supported by vertical metal poles rising up from the ground which in turn support continuous horizontal rails at each floor. The poles support a small balcony outside each French window to allow the windows to be fully opened while ensuring a sense of security.

This pattern of verticals and horizontals, a metre in front of the main box of the building, calms, modulates and scales up the façade, all with the aim of making a fitting large scale new centrepiece to an old crescent.



Leighton Crescent



1st floor: 2-person flats for old people

2nd floor: 2-person flats

3rd floor: 2-person flats

LC 104
 THE DESIGNER'S FLOOR
 CULLINAN STUDIO



Leighton Crescent



CULLINAN
 STUDIO