

Marvin House

Location: California, USA

Client: Private

Completed: 1960

Size: 50 sqm

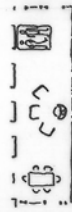
Private **house in the Californian hills** designed and built by Ted Cullinan for his friends, the Marvins.

In the Marvin House, the old concept of rooms, with names behind doors leading from corridors, vanishes altogether. A series of 'green rooms' made from concrete masonry serve a single 'stage' made of sawn Californian redwood.

The green rooms are top-lit except for strategically placed viewing windows made from concrete blocks laid sideways and glazed. The house comprises the green rooms, two dressing rooms with a giant-sized shower between them, a guest's shower and WC, an entrance, a study and a kitchen.

The original plan was to have another two of these houses, one for guests, another for a greenhouse, set further down the hill and served by a driveway of cobbles running straight up the hillside like a San Francisco street. However, illness forced the Marvins to move. The houses became the entrance hall for a vast hyperbolic paraboloid before the whole place was pulled down.





a long gallery of rough Californian redwood, contains a bed, a hearth for sitting around and a table to eat at.

the light in the gallery is warm and ruddy and comes through windows that are like chinks in its wooden sides.

beside the gallery, a row of service rooms

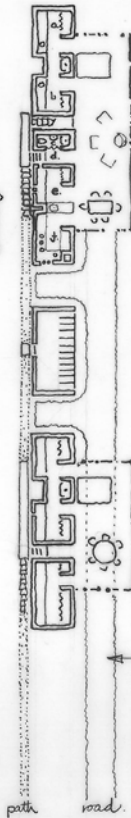
the service rooms are white and brightly lit from above.

and later they will add a greenhouse.

and a guest house going on down the hillside.

and a drive goes straight up the hill like the roads do in San Francisco.

- a. - dressing room (man)
- b. - dressing room (woman) with a double shower between them.
- c. - w.c. and visitors shower
- d. - entrance.
- e. - study.
- f. - kitchen



the hillside slopes up this way

Marvin House, California - 1960.

