

Olivetti New Branches

Location: Belfast, Derby, Dundee, Carlisle

Client: Olivetti

Completed: 1972

Size: 90sqm

Awards: Financial Times Industrial Architecture Award Finalist

Four new branch offices for Olivetti, located in out-of-town industrial estates in Belfast, Carlisle, Derby and Dundee.

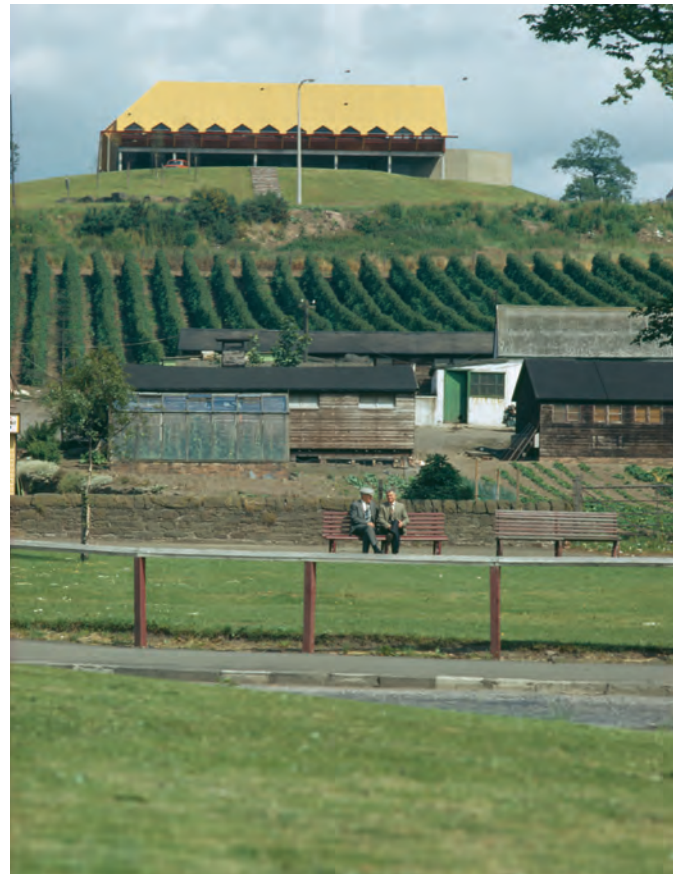
The Olivetti company were producing office machines that were functional, stylish, contemporary and meant to be at home in all situations. They wanted a building system that would help to project a similar kind of image. We responded by devising a flexible system based on a combination of bespoke and standardized elements, taking the courtyard form as a starting point and stretching it to suit the location.

The remarkable light levels inside are ideal for the delicate job of fixing typewriters. Plywood trusses control any glare and block out most of the direct sunlight.

When Olivetti curtailed their UK operations, the buildings were sold off for other uses which included a local computer company and a Chinese restaurant.

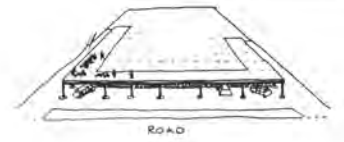
A series of repeated office modules were arranged on top of a ground floor made of concrete, cast in situ. A flat roofed zone of circulation is separated from the individual offices by a modular kit of plywood storage units.

The 45 degree pitched roof was created using a prefabricated system of plywood trusses, supported on the courtyard side by a light steel frame and on the outside by a series of timber fins.

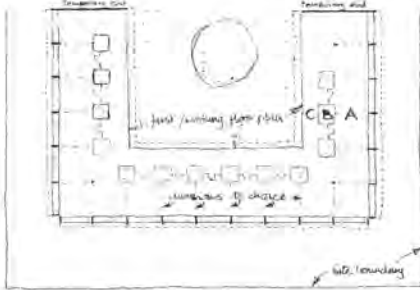
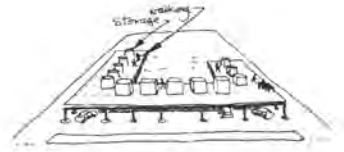




- a cross section that has in it:
- A: working/sitting/concentrating strip.
 - B: storage and entrances related to A.
 - C: a walking strip down the building
 - D: carparking
 - E: storage and heating and elec services etc.

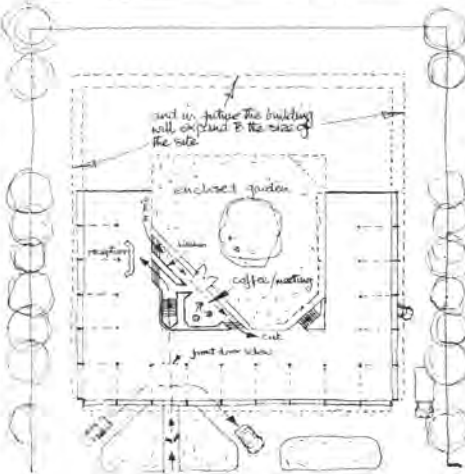
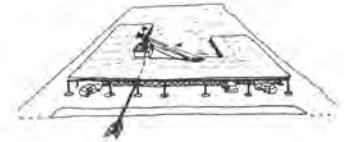


the sun can enter from either side so the section can face any way,

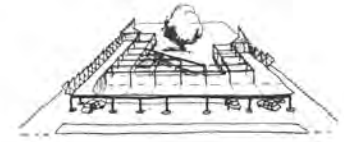


to make a plan that follows the edges of the site and can therefore adapt to any site by altering the lengths of its sides:

- A: the working strip can be divided at any dotted line to make offices, demonstration rooms, salesman's depots, workshops etc.
- B: the storage strip is kitted out to choice.
- C: the walking strip is beside and part of an enclosed garden.

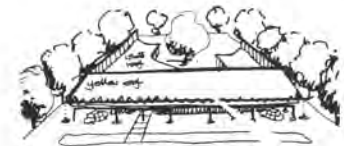


and to enter the building you come in under the working strip, up onto a half level where there is a coffee/meeting place opening onto the enclosed garden, and on up onto the working floor,



and, whatever the shape of the site the building can expand to use it,

and its internal divisions and uses can be altered by moving the (4 panel) straight divisions up+down the working strip.



Olivetti new branches - 1971

