

Torriano Junior School Gatehouse

Location: London Borough of Camden, UK

Client: Torriano Junior School

Dates of Involvement: 2008 - 2010

Construction Cost: £450,000

Size: 200sqm

Awards: Civic Trust Awards Regional Finalist

“Cullinan Studio made us feel very important throughout, showing a genuine willingness to understand our needs and commit to our budget and time schedule... They designed a superb building, which completely captured our vision for teaching and learning, responding positively and creatively to all our demands and requirements.” Bavaani Nanthabalan, Head Teacher, Torriano Junior School

The Gatehouse building creates a new entrance to Torriano Junior School and spaces in which pupils and adults can **learn, work and play**.

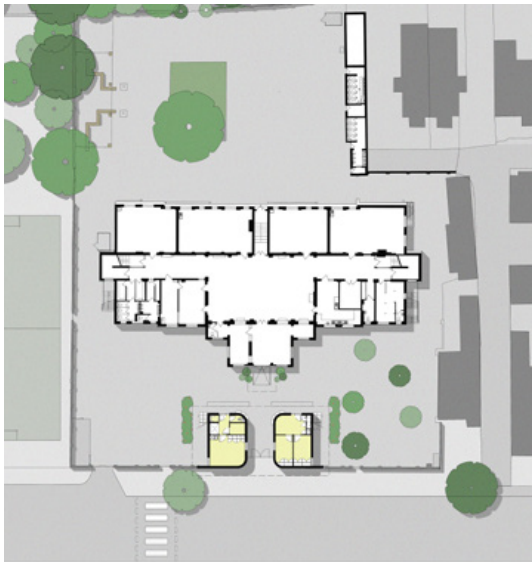
The project aims to develop strong partnerships with parents, the local community and stakeholders by increasing the range of activities and providing extended services. The hall on the first floor can be split into two smaller spaces to accommodate different sized groups and the school’s vibrant range of musical and theatrical pursuits. The ground floor area invites parents and visitors to congregate around the building, where benches with integral planting manage changes in level across the site.

The Gatehouse’s location provides a bridging point between the public realm and the school. Each side of the building has a different function. The street-side forms a positive and exciting new facade that provides a welcoming entrance and views of activities taking place in the music hall above. The school-side has a strong connection to the reception area, and the new brick entrance-way offers the visitor glimpses through windows into the group rooms.

The distinctive double-vaulted roof of the Gatehouse aids with natural ventilation of the first floor hall and reflects and maintains the strong symmetry of the Victorian school building.



**CULLINAN
STUDIO**



Above: Ground floor plan



Above: Playground elevation.



Above: Street elevation and section through the Gatehouse and the school hall.

