

# Twickenham Riverside

**Location:** London Borough of Richmond

**Client:** Richmond Council

**Date of competition:** 2019

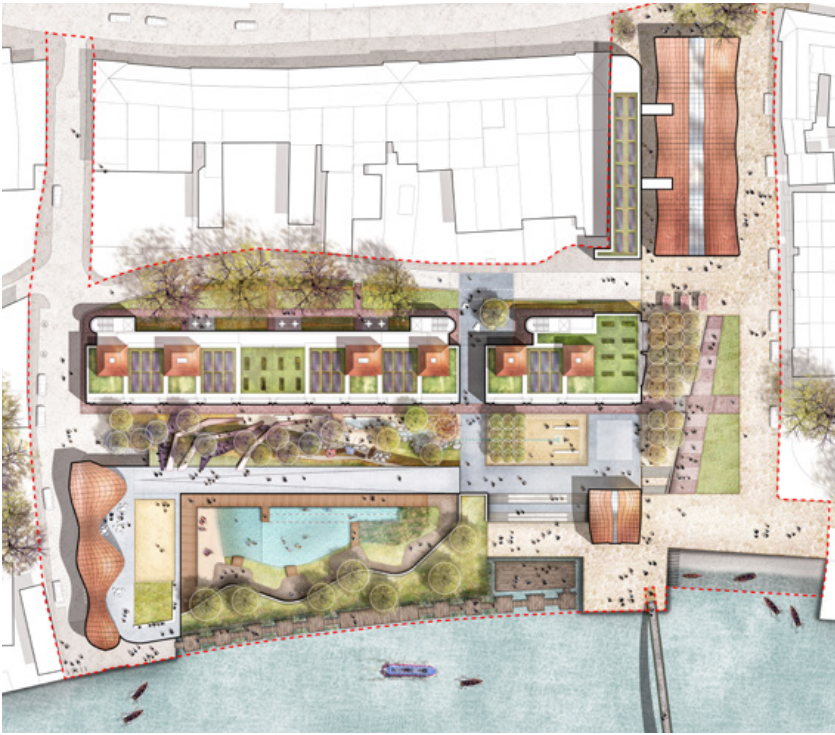
**Our proposals for Twickenham Riverside harness water, the river and the connections people love to make with them.**

As well as providing new affordable sustainable housing to Passivhaus standard, high quality retail, office space, and a reconfigured Diamond Jubilee gardens, we proposed three additional specific interventions to make Twickenham Riverside a unique destination to visit, work and live.

- A new floating landscape creates a direct connection to the river and its tides for the enjoyment of the public and to make a landing point for river traffic.
- A covered market building draws people and activity from the town and opens up direct connections to the river and new activity spaces.
- We also proposed a new outdoor public natural pool - the first in the UK - to provide an economic and sustainable solution for inexpensive public access swimming in a green landscape. Floating reed beds intercept surface water run-off which is then naturally cleaned before passing into the river.

As the story of water extends to the heights of our scheme, the waters edge is further activated as a key component in our design.





The scheme is dominated by a green landscape that surrounds the hard surface external spaces. The landscape becomes a backdrop for creative activities including outdoor theatres, cinemas and art exhibitions.



Co-working office space above a covered market. 'Subscribers' could use the facilities on a flexible basis.



Areas for play are woven throughout the scheme. Spatial use is characterised by choice of landscape materials; passive places are predominantly planted, while active spaces are mostly paved.